

The Helensville Community News

HAPPY NEW YEAR

Issue 194 - January 2026

North West COUNTRY



Summer in our area means A&P Show season – and the first cab off the rank is the much-loved **122nd Helensville Show on 28th February 2026.**

Visitors can enjoy a full day of livestock and equestrian competitions, including dairy and beef cattle, registered and flock sheep, dairy goats, and of course the ever-popular pet lambs, calves, and goats. The equestrian programme features 14 rings of competition, showcasing everything from donkeys and minis to Clydesdales and top-level sport horses.

The pavilion offers an impressive range of indoor competitions and two stages of entertainment, complemented by more than 120 trade stalls. Bring the kids along to watch demonstrations of dog trials, shearing, blacksmithing, farriery, and woodchopping.

Crowd favourites return again this year, including the Junior Farmer competition, the Pet Dog Show, and the famous Terrier Race.

The 2026 theme is **The Horse**, with all-day demonstrations of disciplines such as Western Performance Riding, Kidz Kartz, Mounted Games, Barrel Racing, Heavy Horse and Kaimanawa activities – plus a Donkey Lunch (don't worry, we're pretty sure that doesn't involve eating grass alongside the donkeys!).

Head to the Helensville Show website to grab your tickets today.

Calling All Tourism Operators

North West Country is excited to launch a comprehensive work programme focused on growing destination tourism in our region — and we want to hear from you.

Following our public meeting in December, we will be hosting a full-day workshop in March 2026 at the luxurious **Woodvale Lodge**. This workshop will bring together local tourism operators to develop a **Destination Management Plan** for North West Country.

With support from **Destination Auckland**, we are proud to be the first business association to lead the development of a plan dedicated to our area. This is a major step toward putting North West Country on the map and driving future investment into our region.

If you're a tourism operator and would like to be involved, please contact our General Manager, **Danielle Hancock**, at manager@northwestcountry.co.nz to register your interest.

- Animals
- Sideshows
- Entertainment
- Live music

HELENSVILLE SHOW

February 28, 2026
Kids under 16 FREE, Adults \$15
helensvilleshow.co.nz



Continued on page 2

In this issue...

- **What's happening this month** ~ Pg 3
- **Exclusive South Head Trek** ~ Pg 3
- **December Market's special visitors** ~ Pg 4
- **Be curious not judgemental** ~ Pg 6
- **Lions Christmas Book Fair success** ~ Pg 7
- **The twilight Christmas market success** ~ Pg 7
- **Rodney Local Board update covers the board plans for the future** ~ Pg 8 - 9
- **Act Now: and help Stop the yellow legged hornets** ~ Pg 10
- **Kaipara College Principal appointment** ~ Pg 11
- **Penks Pen** ~ Pg 12
- **Craigweil House wins 3rd place at the Helensville Santa Parade** ~ Pg 13
- **Fixing what matters for Helensville** ~ Pg 14
- **Tide Chart** ~ Pg 14
- **Regular events updated** ~ Pg 15

Like us on Facebook or visit www.helensvillecommunitynews.co.nz

Helensville Community News

Email: helensville@copyandprint.co.nz

www.helensvillecommunitynews.co.nz

Phone: 420 9307

312 Main Rd, Huapai. P O Box 165, Kumeu

All correspondence should be legible and include writer's name and address.

~ COPY DEADLINE ~ 23RD OF THE MONTH ~

ADVERTISING ENQUIRIES:

Phone: Sarah on 0274-831-542 or email

helensville@copyandprint.co.nz

ADVERTISING RATES (Excl GST):

Advertisement sizes, rates and specifications are as follows:

Black & white business Card size advertisement in the newsletter - \$55.00 per single issue. Double Business Card size Advertisement in the newsletter - \$110.00 per single issue. Low density colour business Card size advertisement in the newsletter - \$80.00 per single issue. Double Business Card size Advertisement in the newsletter - \$160.00 per single issue. The above rates include a listing in the Trade & Professional section on the back page. A listing in this section only is \$10.00 per month. All advertisements will attract a 5% discount if paid at the time of booking, including those for 12 issues if paid in advance. For larger sized advertisements or high density colour please request a quote.

ADVERTISEMENT SPECIFICATIONS:

All adverts supplied must be in one of the following formats:

Corel Draw 12, .jpg, pdf or MS-Word (with any graphics sent as .jpg images as attachments).

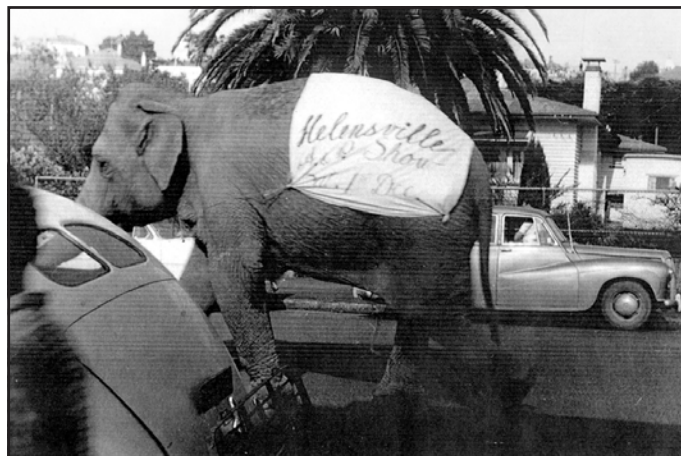
The Helensville Community News is published as an independent community newsletter in conjunction with the Helensville Community Website, www.helensvillecommunitynews.co.nz, to inform the residents, ratepayers and visitors of events and proposals that affect the local area.

Circulation 4,500 — pass it on to your friends.

The views and opinions expressed in this newsletter are those of the individual contributors and not necessarily those of the publishers. While we try to ensure accuracy of information, the publishers accept no responsibility for errors or omissions made by individual contributors.

Publishers: Huapai Copy & Print

Continued from page 1, Images from days gone by



- Business Set up Structure
 - Business Accounting, Taxation and Advice
 - Personal Accounting and Taxation Advice
 - Management Accounts
 - Board Room available for Hire
- 09 420 7835 or Mob 027 284 3849**

ECE Astute Accounting
69b Mill Road, Helensville
www.eceastuteaccounting.co.nz

JS STORAGE
SELF-STORAGE

Contact us now for your storage needs

71 Mill Rd, Helensville

www.jsstorage.co.nz

Email: info@jsstorage.co.nz

Phone: 021 462 930



Aaron Brewis
Mob: 021 992 590

Solid advice & workmanship for over 20 years

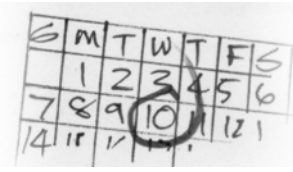
gsi
Guaranteed Shower Installations

We specialise in shower installations. Call us for a quote on your shower installation

0800 4 NO LEAKS 420 8777

info@gsi.net.nz gsi.net.nz

What's happening this month



Sunday, 11 January, Helensville Art Trail (HAT), our studios will be open on the second Sunday of every month until May 2026. We're excited to welcome you back to explore our creative spaces, meet local artists, and enjoy the diverse art on display. All studios offer free entry, ample parking, and a warm, welcoming atmosphere. There's also a brand-new studio to discover this season – another reason to come along and see what's new on the HAT. Looking forward to seeing you soon!

Wednesday, 14 January, FREE Pop Up Obstacle Course, Rautawhiri Park, 10am – 3pm. Are you the next Ninja Warrior? Jump, balance, crawl and throw your way through our Out & About obstacle course all thanks to the Rodney Local Board. Our course is perfect for young and old and a great way to burn off some energy! We even have a special under 5 session at 10am for the little ones. **REGISTRATIONS ESSENTIAL** for Health and Safety reasons! Scheduled Sessions: 10:00am - 10:30am (U5's ONLY) 10:30am - 11:00am, 11:00am - 11:30am, 11:30am - 12:00pm, 12:00pm - 12:30pm, 12:30pm - 1:00pm, Make sure you register your spot now! **Ticket link opens two weeks before event (31st December)** **IMPORTANT NOTE** Upon your arrival please scan your tickets in with our team as they'll have a table area set up at the start of the course. This is important because before each session, we go through a health and safety briefing explaining how the course is done and what not to do during it. Though if you have missed out on tickets, we also have a walk-in sheet at the table you can sign into, and the kids or adults can also get along in the fun. Korikori tinana Whanau

Sunday, 18 January, The Village Market, Helensville Showgrounds, Railway St, Helensville, 8.30am – 1pm. A monthly event that takes place on the third Sunday of every month (except for February) at the Helensville A&P Showgrounds. A lively and friendly market that offers

a variety of stalls, live music from Kenny Luond, free face painting or hair plaiting for the kids, and delicious food and coffee. You can find fresh local produce and plants, artisan food and preserves, handmade crafts, gifts, collectibles, pre-loved items and more. If you are looking for a fun and relaxing way to spend your Sunday morning, you might want to check out this Village Market. No dogs please with the exception of assistance dogs. Gold coin donation for parking – proceeds to the Helensville/Kaukapakapa scouts and St John youth. For more information contact sarah@riversidecrafts.co.nz.

Tuesday, 3 February, U3A Monthly Meeting, 10am – 12pm St Joseph's Church Hall, Kowhai St, Helensville. Speaker to be confirmed. Guests welcome. February 10th **AI for Seniors**. 10.00-12.00 St Joseph's Church Hall, Kowhai St, Helensville. \$2.00 cover charge. We are breaking new ground in community learning by inviting Microsoft Copilot—an advanced conversational AI—as a virtual guest speaker. Facilitated by U3A member Chuck Rademacher, our local tech educator, this session will explore how AI can support lifelong learning, consumer advocacy and creative collaboration. The event promises live interaction, real-time demonstrations, and a glimpse into the future of human-AI partnerships. Open to anyone who wishes to come along, not just U3A members. \$2.00 cover charge. U3A is a national and international volunteer lead organisation for semiretired and retired people committed to lifelong learning and who enjoy interesting company. South Kaipara U3A has more than 60 members and is thriving. It has an informative meeting on the 1st Tues of each month and offers numbers of smaller special interest groups led by members. For more information contact Bev Silvester-Clark bev.s-c@outlook.com or 0274 316 205.

Saturday, 28 February, 122nd Helensville Show, 63 Railway Street, 9am - Bring the family for a wholesome day of country fun, packed with animals, rides and games, competitions, entertainment, food and market stalls. Kids are free, Adults \$15, parking free. See the website for all details www.helensvilleshow.co.nz

Friday, 3 April – 7 April, Kumeu Easter Festival, 12pm – 9pm daily, Kumeu Showgrounds, \$3 Entry, FREE Parking, What to expect: Delicious Food Trucks, Rides & Kids Fun, Retail + Artisan Stalls, Live Entertainment, Easter Egg Hunts, Movies Under the Stars, Big Easter vibes for the whole family, Mark your calendars — your Easter weekend is sorted!

Sunday 18 January
A&P Showgrounds
8.30am – 1pm

Live music from Mike Lea
 and Free Hair Plaiting

Contact Sarah 0274 831 542
sarah@riversidecrafts.co.nz

Gift baskets made to order

phone Sarah 0274 831 542
sarah@riversidecrafts.co.nz

 @sarahsgifhampers

WAIONEKE SCHOOL
 FUNDRAISING
EXCLUSIVE SOUTH HEAD TREK

14 FEB 2026

Support Waioneke School while experiencing stunning private Farmland and Forestry on the South Head Peninsula

TREK DETAILS:

- 10km or 20km options
- Self guided walk or ride
- Trek starts from 8am
- Suitable for all experience levels
- Family prices available
- Price includes sausage sizzle and cake slice

\$45 Walkers
 \$55 Riders

Scan the QR code to book or contact us for more info
Fundraising@waioneke.school.nz



Helensville Birthing Centre

TE PUNA WHANAU KI TE AWAROA

Helensville Birthing Centre is your local community facility. It provides a free service for women who choose to give birth in a low-tech environment. Alternatively, women who give birth in hospital can then transfer to us for the opportunity to rest and establish breastfeeding.

You are welcome to call in and have a look around, or browse our facilities online.

53-65 Commercial Road, Helensville
Ph (09) 420 8747

Email bookings@helensvillebirthingcentre.co.nz

www.birthcentre.co.nz



babyBARNs

WHEN A GARDEN SHED JUST WON'T DO!



Ph. 09 420 3298 | Mob 022 075 8283

info@babybarns.co.nz | www.babybarns.co.nz



**NOR-WEST
& KUMEU GLASS**

nwkg@xtra.co.nz

9a Weza Lane, Kumeu

- Residential glass repairs
- Automotive glass repairs (windcreens/side windows/rear screens/stone chips)
- Commercial glass repairs (shop fronts)
 - Cat/Dog doors (supply & install)
- Glass cutting onsite
 - Splashbacks
 - Mirrors
 - Table tops
 - Picture frames
 - Double glazing



We also handle insurance claims with your preferred insurance company.

We are also Massey Glass and our services extend all over West Auckland

Give us a call today!! 09 420 8210 / 0800 825 100

This year's December Market had some very special visitors!



Ashleigh and Santa



The Cougar Chorus

THE REAL DEAL

AWARDED FOR EXCELLENCE,
TRUSTED FOR RESULTS



Local experience. Proven results.

NOW BACKED BY BARFOOT & THOMPSON'S UNMATCHED NETWORK

SINCE 1 JANUARY 2025, KELLY HAS SOLD:



\$40million+
worth of properties

SOLD

39
properties



\$3.63million
average per month
in your local area

GIVE ME A CALL IF YOU'D LIKE TO BE A PART OF THAT



Helensville



Parakai



True as of 09/09/25



True as of 09/09/25

Kelly Davison RESIDENTIAL/LIFESTYLE SALES
027 467 0175 | k.davison@barfoot.co.nz

**BARFOOT
THOMPSON &**
LICENSED REAA 2008

BOUTIQUE GIFTS CLOTHING

60 Commercial Road
Helensville

www.eleventhhourgifts.store | 021 079 5475



DOG GROOMING

Professional Clipping

I have had over 40 years experience professionally grooming

Full grooming service: Clipping, Bathing, Nails

- Poodles • Spaniels • Bichons • Shih Tzu
 - Maltese • Lhasa Apso • Schnauzers • Terriers
- All long haired X Breeds

Pick up service available

Christine 021 521 303



ATL PLUMBING LTD

QUALITY SERVICE AT COMPETITIVE RATES!

*Maintenance *Renovations *Cylinders *Roofing
*Spouting *Central Heating *Gasfitting + more...

~ CONTACT US WITH ANY ENQUIRY OR FOR A FREE QUOTE! ~

Ph: 09 420 7868 Adam: 021 245 9677

OR: 0800 285 758 (0800 ATL PLUMBING)

E-MAIL: adamandanita@xtra.co.nz OR: 



Groomville
BOUTIQUE PET SPA

Book your canine
companion a pampering
online at

www.groomville.co.nz

44 Garfield Road, Helensville

M: 021 246 5354 E: groomvilleltd@gmail.com

FULL GROOMS * MINI GROOMS * BATHING * DESHEDDING



PLANT CENTRE

Specialists in
plants for this area
- Vegetables
- Fruit trees
- Natives
- Garden plants
- Design services
- Planting
- Landscaping

Kaipara COAST

SCULPTURE GARDENS

Get inspired and
have a relaxed fun
family afternoon
out. Come on our
1km garden and
sculpture trail.
Allow 1-2 hours.
Garden entrance fees apply

Plant Centre & Sculpture Gardens

open 7 days 9am to 5pm ph 09 420 5655

1481 Kaipara Coast Highway,
4km north of Kaukapakapa Village

www.kaiparacoast.co.nz

Be curious, not judgemental.

by Kaiya Jones, Year 13 Student, Kaipara College

Kia Ora, Reader!

I hope you are not too stressed out during this season of festivity! I, for one, am beginning to feel the looming shadow of last minute Christmas shopping (which I swore wouldn't happen again) hovering over me. I feel it is a certain type of person who can seize this chaotic time of year, and ladies and gentlemen, I am not one of them. I must say, the heat and sunshine is so incredibly welcome...until I actually have to do anything, at which time I engage in the ritualistic behaviour of cursing the blazing ball of gas in the sky.

I'm of the mind that the best thing a student can do with their holidays is work part time. Sure, having an actual holiday is important, but there are so many good things that come from part time work. It teaches self-management, money-managing, responsibility, time-management, commitment, etc. However, unfortunately, with the territory comes the abundant problem of places of employment requiring experience, and kids not being able to get the experience required to land a job. It would appear one of the only ways to guarantee getting a job when you have little to no experience is through connections. Once you know people you have routes into workplaces, people who can vouch for you, and ones who can help you seize opportunities as soon as they come.

The second best thing that a student can do with their holidays is to live, have fun, make mistakes and learn. To all the parents out there; I know you want to protect your children from every hurt in the world, and sometimes letting them make mistakes is like watching a car crash. But making mistakes is half the fun in life, and the most opportune time to make them is when you are young and have little responsibilities for the better part of 3 months. When people reflect upon their lives, they frequently say school was the best part of it. I don't know that I agree with school being the best part, but I would surely agree with anyone who claims the school HOLIDAYS were a good time. Talk about the best time of your life, you get unburdened freedom, especially if you do not have a job, and your only limitation is how far your parents are willing to drive you.

Now as this is my last article, I would like to wish you a wonderful life, Reader, and impart on you some quotes which I plan to live by, and which I think everyone could benefit from keeping in mind.

1. "Do not fear death, for lack of knowing what lies beyond. This will only hinder your ability to enjoy life and all it has to offer. When you have lived a full life, and death comes, you will welcome it with open arms. For whatever is on the other side, be it everything, or nothing at all, it will be to you nothing less than the next great adventure."
2. "It's easy for an ego to complain and criticise; it takes awareness and intelligence to stand above the ego."
3. "Be curious, not judgemental."
4. "Humans evolved to live together based on caring and sharing - compassion and justice since that promotes surviving and thriving for both individuals and bands."
5. "Comparison is the killer of happiness. Do not let the accomplishments of others diminish the hard work you put into your own, and be kind to others, but most importantly, to yourself."

Yours sincerely,
Kaiya J.



LIONS CLUB of HELENSVILLE

CHRISTMAS BOOK FAIR 29th & 30th November 2025

The Christmas Book Fair was held in November at the Helensville A&P Showgrounds in conjunction with South Kaipara Good Food (SKGF). A brilliant couple of days, with the Santa Parade on Saturday. The weather holding until the afternoon on Sunday, when the heavens opened. Book sales were slightly down on the May Book Fair, totalled \$12,180 and with the raffles, and BBQ trailer takings yet to come, still a very satisfactory result. After expenses the total will be shared with SKGF to tide them over the holiday period when demand for assistance reaches its peak. The remainder will be deposited into the Lions Club of Helensville Charitable Trust and used to help the many individuals and organisations in our community who are in the need of assistance.

Thank you to all who donated so many high-quality books, without you it would not have been possible to hold the event. Many thanks to the students from Kaipara College and volunteers from SKGF who helped in the set up on Friday. Also, the Friends of Lions and family members who assisted in packing up and cleaning the Hall on Sunday. Putting together a book fair is an all-round team effort and we would not be able to do it without the assistance we receive from our community, especially the Helensville A&P Show who gave us the unlimited use of their facilities for the lead up to the weekend. A special thanks to Burmester Realty for letting us use their premises as a drop off point, and to Chris Smith who has given us the use of his shed where the books are sorted and stored.

The books left over will be re-sorted with damaged or unsaleable books going to the Helensville Recycle Centre. Surplus children's books are distributed to Play-centres and Kindergartens. Other books are sold at the Lions book stall at the Village Market, which is held on the third Sunday of each month at the Helensville A&P Showgrounds.

The next Book Fair is our Autumn Book Fair which will be held on the last weekend of May Saturday 30th and Sunday 31st.

As a service to the community the Helensville Lions will accept books throughout the year. Small amounts can be left with Burmester Realty, Commercial Road, Helensville, larger amounts can be delivered to our shed on a Tuesday afternoon between 1pm and 3pm. The shed is situated behind the Gull petrol station in Mill Road, Helensville. Otherwise, contact Chris at 027 646 3324 or any other member of the Lions Club of Helensville.

The Twilight Christmas market on Thursday 11 December was a huge success as usual



Tractor mowing with mulcher

Phone Nick on 0274 MOWING (0274 669 464) Paddocks or Sections

ACTIVE EXPLORERS

Come check out our brand-new, purpose built childcare centre.

14 Commercial Road, Helensville, Auckland
P: 09 222 3277 | www.activeexplorers.co.nz

Rodney Local Board update from Mark Dennis

Kia ora team!

Hope everyone is having a great week and enjoying the wonderful weather as we head into summer. Below are a few updates and opportunities for you to have your say! Firstly is our Local Plan is taking shape, and we need to understand what you want before it is completed, and secondly, we have 2 footpaths getting constructed and we would love to hear what you think.

Local Board Plan

Our local board plan is the guiding document which sets out what we will achieve over the next 3 years, and we need your feedback on what you want to see in it.

Over the past few years, we have focused heavily on: Youth, Footpaths, Transport, Playgrounds, Environment, What do you want to see over the next 3 years? Have your say here [Local Board Plan Feedback](#)



Protecting our Greenways

As part of the Rodney West Greenways Plan, Auckland Transport are planning to restrict motor vehicles on the Macky Road extension up to Anderson Road. This will keep the paper road safe for people walking, cycling, and horse riding, while also protecting the local environment and creating more recreational opportunities.



The changes we're making by the end of November 2025

- Formalising the existing Traffic Filter Control Gates outside 78 Macky Road and the intersection with Anderson Road. These gates will stop motor vehicles from entering, making the paper road safer for people on foot, bike or horse.
- The traffic filters that will be implemented to block motorists from using this section of the road are fully authorised under clause 2.1 of the Land Transport Rule: Streets Layout 2023.

This project was kicked off by locals who expressed concern to the Rodney Local Board about the damage being done to this paper road by off road vehicles who were joy riding and intentionally tearing up the surface making it unsafe access. We are pleased to be able to show a result for the community.

South Head Road (between Shelly Beach Road and Green Road)



Between 2020 and 2024, a total of 32 crashes were reported along this section of South Head Road. These included 1 fatal crash, 4 serious injury crashes, 12 minor injury crashes, and 15 non-injury crashes. Of the 32 crashes, 26 involved loss of control or head-on collisions. (Locals will say that the majority of smaller accidents are never reported so the numbers could be higher). In response to the high number of these crash types, the Road Safety Team proposes the following safety treatments:

- Install Audio Tactile Pavement Marking (ATPM) on the centreline throughout the corridor
- Install additional curve warning signs and chevron signs
- Install new edge marker posts and reflective raised pavement markers (RRPMs)
- Install High Friction Surfacing at the bend

These measures aim to improve curve delineation, enhance skid resistance, and increase driver awareness of lane departures or centreline crossings. As a result, these treatments are expected to reduce the risk of run-off-road and head-on crashes, particularly among fatigued or distracted drivers.

New! Rautawhiri Park Footpath

We are planning to extend the footpath outside Rautawhiri Park all the way to the gate, so no longer will people have to walk in the wet grass to get to the park.

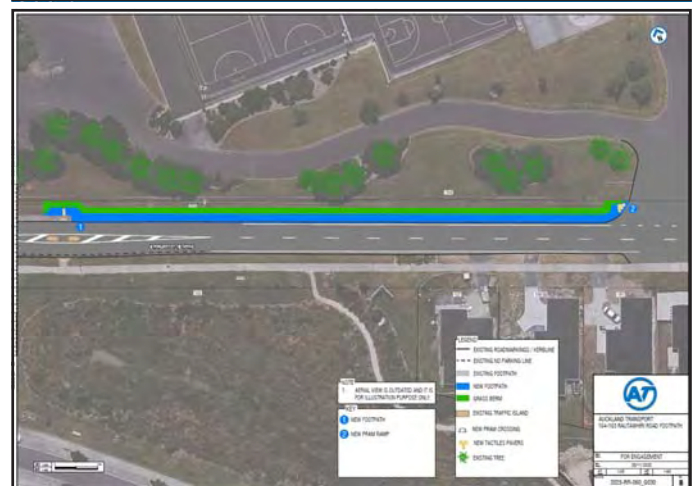
But we need to hear from you! What do you think? Is this a good idea? Does it go far enough? Should we extend it to the playground? Should we do it at all? Please give us your feedback.

Improving safety and accessibility near Rautawhiri Park in Helensville | Auckland Transport AT

Improving safety and accessibility near Rautawhiri Park in Helensville

We're improving footpath safety in the area to provide safe and well-connected walking options for the community.

haveyoursay.at.govt.nz/rautawhiri-park



New! Waitoki Park Footpath

A new footpath for Waitoki is on the plans. And while this will greatly improve safety and walkability, it will also mean that we will lose some carparks. So we need to hear from you!

As part of the consultation for this project Paul Manton and I were invited along to the Waitoki hall for a community meeting.

We had a fantastic turnout of locals, they asked great questions, and I think everyone left feeling heard and having a stronger understanding of Local Board budgets and decision-making processes.

It was clear that the community values footpaths, parking, appropriate road crossings, and they want to see a long-term plan

Rodney Local Board update from Mark Dennis



for their township.

Waitoki isn't just part of a main road, it is a township, and a community, and this should be at the heart of any decision-making. Improving safety and accessibility on Kahikatea Flat Road, Waitoki



Fixing Wishart Road

Following a number of storms and slips, we are finally getting a permanent repair to Wishart Road.

This fix involves realigning the road and cutting into the hill. Major retaining is required, and they are making great headway with the construction.

Over the past few years, they have been doing temporary repairs to allow Auckland Transport to monitor the slip and damage. Part of the issue was the amount of water retained by the soil under the road which resulted in the road continuing to slowly

move. Drainage has been added to support this. Test drilling also took place to see if a simple retaining could be installed to hold the existing road in place but after drilling over 30m down they only found more soft soil and nothing substantial to drill down to.

These are a few bullet points of what AT has ticked off so far.

- Estimated 360 soil nails to be installed(drilling and grouting) in total 90% completed to date.
- Soil nail testing to be completed.
- Hydroseeding top batter completed.
- Fencing in progress from southern end to slope of soil nail slope northern end.
- Topsoiling, not yet started on program.
- Subsoil installation for kerb and channel.
- RC Piles tidy up, not yet started on program.

Supporting our Community Patrol



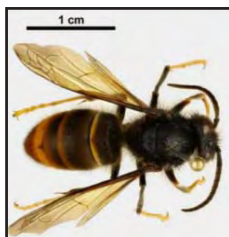
We are proud to be backing our local South Kaipara Community Patrol.

As an ex-community patroller myself and former secretary of the SKCP, I have a lot of respect for the long hours and commitment that our patrollers put in.

Keep up the amazing work team, it is truly appreciated by the community.



Act Now: Stop the Yellow Legged Hornets



It's not too late to eradicate them - every Aucklander can help.

These hornets are not native to New Zealand and pose a serious threat to our insects and pollinators. If they become established the impact would be severe for beekeepers, growers and our biodiversity.

Pollination is important for much exports such as kiwifruit and other fruit, it also supports pasture productivity with the nitrogen fixing of clover and other plants. Increased management costs and reduced productivity are real risks

The good news is that New Zealand has a skilled and experienced response team. MPI Biosecurity is supported by a Technical Advisory Group (TAG) and beekeeping organisations, and is following best practice with advice from international experts who have dealt with these hornets.

I have met the people from MPI leading the fight against the hornet, our biosecurity minister, and beekeeping organisations, and I have every faith that the experts are doing everything necessary to deal with this invasion.

Our best defence is still the vigilance of members of the public reporting suspected nests or hornets.

- **If you see a suspected hornet or nest:** photograph it, record

location and report to MPI online or hotline 0800 809 966

- **Do not try to remove the nest yourself:** MPI will destroy the nest safely ensuring that no hornets escape
- **Stings:** Hornets sting multiple times with much longer stings than bees and can spray venom into eyes if threatened
- **Beekeepers:** set traps and regularly monitor hives for "hawking"

As of writing this, there still have not been any sightings outside of the initial Glenfield/Birkdale zone. The reason that they have added Zone C (11km from ground zero) is because of the development of the hornet's lifecycle (workers present) rather than their territorial expansion. Nests are no longer producing a single queen, but also hundreds of workers. Their workers predate on other insects; especially honey bees, which is why all beekeepers in Auckland are asked to set traps and regularly monitor their hives as they are like magnets to hornets. Also, beekeepers around the country are asked to monitor apiaries in case the hornets have accidentally been transferred on vehicles or machinery.

Eradication is possible but it will take a sustained effort. Please check your garden for possible nests or hornets. The next best thing that you can do is to share the urgency on social media and counter the negative or malicious posts that undermine this important drive to eradicate the invasive yellow legged hornets. Check out the MPI website for up-to-date information and identification of hornets and be a positive force for good to help us all eradicate hornets from our delicate ecosystem.

This is not a political issue or about the effectiveness of MPI, this is a threat to our honey industry and anything that relies on pollination, and our biodiversity. Get out there and check for hornets and when online, counter false information. We can do this New Zealand.

*Ken Brown
Apiculture Tutor, Land Based Training Ltd
President Auckland Beekeepers Club*



Scan this QR code with the camera on your phone to link directly to the MPI hornet response page.

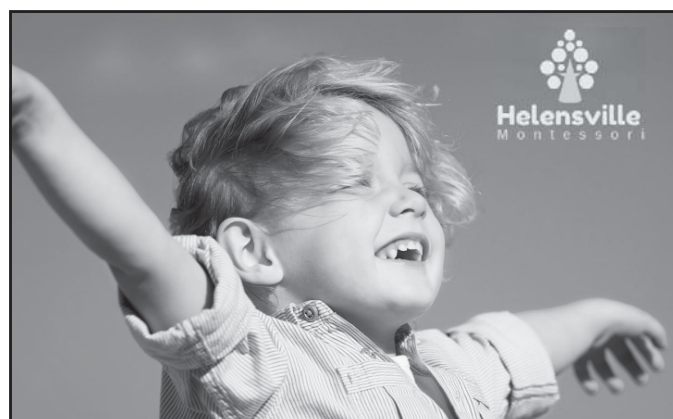


"Professional and friendly service for all your vehicle needs"

WOFs - Brakes - Suspension
90 Mill Rd, Helensville
Phone 420 8177

www.helensvillemechanical.co.nz





Helensville Montessori

An Early Learning Centre for children aged from 2 to 6 years.
Where "skillful teachers support children to become confident and competent learners." - *Education Review Office*
And with generous garden spaces for serious running and playing.
Come and see us anytime. We'd love to show you all that Montessori can offer your child.

58 Garfield Road, Helensville. 09 420 7181
www.helensvillemontessori.co.nz and 



Kia ora, The Kaipara College School Board are delighted to be able to announce the appointment of the new Principal of Kaipara College. Despite the challenge of running a recruitment process very late in the academic year it was pleasing that we received a significant number of high-quality applications, reflecting the attractiveness of a role at Kaipara College and the opportunity to live and work in our rohe (district), and to guide our akonga (students).

We were looking for a committed, courageous and resilient leader who showed a deep understanding of Te Waka o Kaipara (our WAKA values), and who had a clear plan to bring them to life. Also central to our search was the desire to identify a leader who was committed to an 'everything matters' approach to student standards and behaviours, to maintaining high academic expectations, and who cares deeply and believes strongly in the capability of our students to excel and live up to our motto - Eke Panuku, Eke Tangaroa (navigate to success).

We believe that in Jane Coup we have found that leader. During her 13 years at Waitakere College, she has consistently initiated and led groundbreaking initiatives that have raised equity and significantly improved academic performance, including driving forward the biology scholarship programme and founding the Maori and Pasifika Medical Science Academy. She has a Masters of Secondary School Leadership from Victoria University, and over 20 years education experience across roles as head of biology, head of science, Y11-13 dean, as deputy principal, and also sat on the school board as teacher representative for 5 years. She was recognised in 2023 as an emerging leader and in 2025 was invited to the New Zealand Education Scholarship Trust leadership forum, a highly prestigious accolade designed to prepare Deputy Principals for Principalship. Our new Principal will take up their post for the start of the 2026 year, and will be welcomed into the role and our community with a powhiri early in the school year.

More details of these events and other opportunities to get to know Jane will be shared closer to the time. The School Board would like to recognise the strong and positive leadership of Bernard Coleman as Acting Principal over the past 3 months, and thank him for his service. Bernard's calm, consistent and determined leadership has had an immediate impact on our Kura, recognised by students, staff and whanau alike. We are committed to supporting Bernard's ongoing professional development journey and believe the combination of Jane and the existing Senior Leadership Group, including Bernard and his fellow Deputy Principals Brianne Te Paa and Brigitta Bravery, means we have all the ingredients needed to deliver real change and become the school of choice in our community again. Nga mihi o te wa.

Colin May Presiding Member, Kaipara College School Board

Te WAKA o Kaipara: Navigate to Success
Te WAKA o Kaipara: Eke panuku, eke Tangaroa



**Sean Gray
Electrical Ltd**

For all your electrical requirements
0274 784 396

Email: info@seangrayelectrical.co.nz
www.seangrayelectrical.co.nz

BEAUTY ELIXIR

Helensville with Maria Schofield

Mob: 022 465 0727

**LIFESTYLE MOWING
MACHINERY**

"We will put the fun back into mowing"

- * Quality brand mowers & ride ons
- * Unparalleled service & Support
- * Large Product range

Come in and see us today!
 8 Stevens Lane, Waitoki
 Or
 Call us on 0274 955 948
www.moadoc.co.nz

Masport BRIGGS & STRATTON VICTA GOLD DEALER
 BILLY GOAT FERRIS VICTA Altogether Better

**MID WEST
PUMPS**

☎ 09 420 7694

Water Pump Sales & Servicing
 Deep Well & Submersible Specialists

Helensville Shuttles

9 Seater Van
 Airport Transfers ! All Social Events

Phone Tony
0272 777 339
 Email tleach2020@outlook.com

Chris Penk
MP for Kaipara ki Mahurangi

Here to help
134 Main Road, Huapai • christopherpenk
chris.penkmp@parliament.govt.nz • 09 412 2496

National
Authorised by Chris Penk, 134 Main Road, Huapai.



National N **From Penk's Pen** CHRIS PENK – MP

Happy New Year, and welcome to 2026. I hope this message finds you well and feeling refreshed after a good break, whether that meant time at the beach, a staycation, or catching up with family and friends. Summer always reminds me how lucky we are to live in the Kaipara ki Mahurangi electorate. Our towns, coastlines, farms and communities make this a special place to build a life, grow a business, and raise families.

I'm personally feeling renewed, with a fresh sense of energy for the months ahead. Barbecue season is a great chance to catch up, and it often gives people the space to reflect on what's happening locally once the pace of everyday work eases. I'm looking forward to getting out across the electorate and hearing what's on people's minds. Those conversations, whether planned or spontaneous, help guide the work I do and shape the issues I take back to the Beehive to discuss with my parliamentary colleagues.

One of the real highlights of the year for me is A&P show season. It's a fantastic opportunity to touch base with the community, and of course enjoy the competitions, food, and animals. I'll be at three shows this year and would love for you to stop by and say hello. The Helensville A&P Show is on 28 February, Kumeu on 14 and 15 March, and Warkworth on 21 March.

As school, work, and university get underway, I know many households are juggling timetables again, and I wish students, parents, and everyone returning to busy routines a smooth and positive start. I'm entering 2026 with gratitude for our part of the world and the job that allows me to represent it. Thank you for the warmth and support you show me in this role. Here's to a happy, healthy year ahead.

*Chris Penk MP
MP for Kaipara ki Mahurangi*

BUYING OR SELLING PROPERTY?

Jana Mills
021 509 990
jana@prestigerealestate.co.nz



Prestige
Real Estate International Ltd
Licenced REAA2008

www.prestigerealestate.co.nz
janamillsrealestatespecialist

Gumboots First 6 Weeks Free for New Enrolments!!
Enrol Now, Start any time in 2025



The centre of everywhere
1157 Peak Rd Just minutes from Helensville/Parakai/Kaukapakapa Ph: 411 9038

COME VISIT US!
WE ARE LOCATED NEXT TO PARAKAI SPRINGS



Discover a warm and caring home, nestled within the Kaipara Coast and Parakai's geothermal waters.
Rest Home • Hospital • Day Stays

Craigweil House
Home & Hospital
FEEL AT HOME WITH FAMILY

HENRIKWEST
CARE GROUP

09 420 8277 | 143 Parkhurst Rd, Parakai | info@craigweilhouse.co.nz

KPL
KUMEU PLUMBING LTD
EST 1974

-  plumbing
-  drainage
-  roofing
-  water pumps
-  water filtration
-  gas fitting
-  woodfires
-  solar heating
-  pool & spa

Ph. 420 9108 Fax. 412 7555
Email. info@kpl.co.nz Web. www.kpl.co.nz

156 Main Road, PO Box 128, Kumeu, Auckland 0841

Craigweil House wins 3rd Place in the Helensville Santa Parade 2025

As we welcome the New Year, we hope you enjoyed a happy and relaxing holiday break.

Craigweil House Home and Hospital was delighted to take part in the Helensville Santa Parade, joining the celebrations with our Polar Express-themed float. Held at the Helensville racecourse, the parade enjoyed beautiful sunny weather, making it a perfect day for a festive community event.



Our float brought the Polar Express to life, complete with the Conductor leading the way and plenty of festive details that captured the spirit of the much-loved Christmas story. There were lots of smiles and waves as the float made its way through the racecourse, spreading Christmas cheer to everyone watching.

We were thrilled to receive **3rd Place in the Business Category**, a lovely way to end the year and be part of such a positive community celebration.

As we look ahead to 2026, we warmly invite you to drop by Craigweil House if you are looking for a place for yourself or for a loved one, and see what we offer and to experience the welcoming environment we're proud to provide. PH 094208277





COUNTRY MEAT PROCESSORS

opening hours
Mon-Fri 7am-6pm | Sat 7am - 12pm
1578 Kahikatea Flat Rd, Kaukapakapa

— YOUR LOCAL RETAIL —

BUTCHER

Fresh sausages, dry cured bacon, fresh beef, pork & lamb plus lots more

09 420 3113 | 021 161 4270

— YOUR LOCAL SPECIALISTS FOR —

HOMEKILL

& HUNTING





"Need help navigating the disability support system"

Flying Kites is now offering **free** 1:1 online Support Sessions to help you get unstuck on one specific issue — with guidance from an experienced disability advisor.

These focused online appointments give you:

- ✦ Clarity
- ✦ Expert advice
- ✦ A practical plan you can take forward

Current Support Topics:

- Leaving school (transition support)
- New to Needs Assessments
- Individualised Funding (IF)
- Work and Income

If you're in the Auckland Region and need support in one of these areas, you can register your interest through our short form below. We'll match you with the right expert and send you a link to book.

✦ Flying Kites Support Sessions (online) – Fill out form <https://forms.office.com/r/TLPCBystrW>

You don't have to navigate the disability system alone — we're here to help

Special thank you to Foundation North for their support on this pilot project.



CONTROL ALT REPAIR

www.controlaltrepair.co.nz

On-Site Computer Repair Services

- Laptop and desktop repairs
- Home and office I.T support
- Data recovery and backups
- Virus removals and security
- Any general computer issues

Contact Michael today
info@controlaltrepair.com
Phone: 021-251-4138



ALPHA DRAINAGE

Water Storage and Stormwater Systems.
Septic Inspections/New/Repairs
Driveways/Farm Maintenance.

Scott Nabarro
alphadrainage@gmail.com
Ph: 0226 352 140



Fixing what matters for Helensville

By Simon Court, ACT MP

Helensville has been under growth pressure for a long time. People want to live close to the township, close to jobs, schools, and community life. The problem hasn't been a lack of suitable land. It's been a planning system that makes it far too hard to line up housing with the infrastructure needed to support it. Fixing what matters means fixing that mismatch.

As a former civil engineer, I've seen this problem from the ground up. Projects that make sense on paper stall not because they're unsafe or poorly designed, but because the system treats land use and infrastructure like strangers who only meet at the last minute. Under the Resource Management Act, wastewater capacity, in particular, has been a recurring handbrake on sensible development in Helensville.

Time and again, housing proposals have progressed through early design and planning, only to hit a wall when wastewater capacity becomes an issue late in the consenting process. By then, developers have already spent significant time and money, only to be told upgrades aren't scheduled or capacity hasn't been allocated. That kind of uncertainty kills good projects and pushes growth further out, where infrastructure is even harder and more expensive to deliver. That's not smart planning. That's backwards planning.

The Government's replacement of the RMA is about fixing what matters by changing the order of events. Two new laws — the Planning Bill and the Natural Environment Bill — will fundamentally reshape how we plan for growth. The Planning Bill is about enabling development and regulating land use. The Natural Environment Bill is about managing natural resources and environmental protection. Together, they aim to protect what matters while allowing communities like Helensville to grow with confidence.

Under the new system, long-term spatial plans will identify where growth should occur and how it will be supported by infrastructure, including wastewater, from the outset. Instead of capacity constraints popping up halfway through a consent, they're addressed early as part of an agreed growth strategy. Councils, communities, and developers work from the same playbook. Infrastructure is planned first, housing follows, and fewer people get nasty surprises.

This better sequencing matters for transport too. When development is blocked close to Helensville, growth gets pushed further out, adding pressure to State Highway 16 and increasing commute times. Enabling housing in sensible locations reduces unnecessary sprawl and allows transport and services to be planned more efficiently. That's fixing what matters for everyday commuters, not just balance sheets.

The reforms also deliver a fairer deal for landowners. If councils

impose significant restrictions — through heritage rules or landscape controls — they'll need to consider the impact on property owners. That could mean lower rates or more flexibility to develop the usable parts of a site. It's a more honest balance between environmental protection and property rights, with fewer hidden costs.

These changes won't happen overnight, but they reset the fundamentals. Less delay. Less guesswork. More certainty. ACT has been a driving force behind reforms that fix what matters — putting in place a planning system that lets Helensville and the wider north-west grow in a way that's practical, affordable, and properly supported.

SHELLY BEACH TIDE CHART					
Date	High Water Shelly Beach	Sun Rise	Sun Set		
January '26					
1 Thu	0922	3.8	2145	0604	2043
2 Fri	1026	4.0	2249	0605	2043
3 Sat	1123	4.1	2345	0606	2043
4 Sun	1214	4.2	-	0607	2043
5 Mon	0036	4.0	1301	0608	2043
6 Tue	0124	4.0	1315	0609	2043
7 Wed	0208	3.9	1427	0610	2043
8 Thu	0250	3.8	1509	0610	2043
9 Fri	0332	3.7	1550	0611	2043
10 Sat	0415	3.6	1633	0612	2043
11 Sun	0501	3.5	1720	0613	2043
12 Mon	0554	3.4	1813	0614	2043
13 Tue	0654	3.3	1914	0615	2042
14 Wed	0802	3.3	2020	0616	2042
15 Thu	0908	3.4	2125	0617	2042
16 Fri	1003	3.6	2219	0618	2041
17 Sat	1049	3.7	2305	0619	2041
18 Sun	1129	3.9	2346	0620	2041
19 Mon	1206	4.0	-	0621	2040
20 Tue	0024	3.8	1241	0622	2040
21 Wed	0101	3.9	1317	0624	2039
22 Thu	0138	3.9	1354	0625	2039
23 Fri	0216	3.9	1432	0626	2038
24 Sat	0256	3.9	1513	0627	2037
25 Sun	0339	3.8	1559	0628	2037
26 Mon	0427	3.7	1650	0629	2036
27 Tue	0524	3.6	1750	0630	2036
28 Wed	0631	3.5	1859	0631	2035
29 Thu	0750	3.5	2019	0632	2034
30 Fri	0909	3.7	2137	0633	2033
31 Sat	1017	3.9	2242	0635	2033
February '26					
1 Sun	1112	4.1	2336	0636	2032
2 Mon	1200	4.2	-	0637	2031
3 Tue	0022	4.1	1243	0638	2030
4 Wed	0104	4.1	1322	0639	2029
5 Thu	0143	4.1	1359	0640	2028
6 Fri	0219	4.0	1434	0641	2027
7 Sat	0254	3.9	1508	0642	2026
8 Sun	0329	3.7	1543	0643	2025
9 Mon	0407	3.6	1622	0644	2024

HELENSVILLE DIGGERS

Great Operators at **GREAT** Prices

Tip Trucks and Excavators

You want it we do it!!!

DON'T DELAY PHONE TODAY!

Peter or Clifton

021 454 793

021 454 780

A/H: 09 420 7023





Regular Events

60 Plus, Held the last Thursday of each month, 10am morning tea provided, a great opportunity to meet others in a relaxed friendly atmosphere. Held at Magnify, 118 Commercial Rd, around the back, downstairs. (There is a ramp) Jocelyn Read 0211-726-547.

Al-Anon Family Groups can help. Free lunchtime meeting every Wednesday, 12.30 pm in small office at rear of carpark Magnify, 118 Main Road, www.al-anon.org.nz. Chris K 021-157-1692

Aqua Aerobics - Low impact exercises to improve your health - and wellbeing. Classes: Mon, Wed, Fri, 9am - 10am, held in the outdoor pool at Parakai Springs Hot Pools all year except public holidays. Cost: \$2 per class, \$7 pool entry for non-cardholders. Contact Ruth on 0210-2277-481 for more details.

Car boot, garage sale market. \$15 per stall. 2nd Saturday of the month, 8.30am to 12.30pm. Positioned by the bollards up by the street footpath, 40 Commercial Road, beside WINZ. Enquiries to 021 488 427

Citizens Advice Bureau: Helensville, is open Monday - Friday from 10am to 1pm at 16 Commercial Rd, Helensville. JPs are always available. Come for information and advice.

Diabetes & Arthritis Group - First Monday in the month unless it's a public holiday. Held at the Anglican-Methodist Church, 60 Garfield Road, Helensville, from 10am to 12pm. Morning tea provided. Speaker and fun times. Contact Shirley on 420-6501 or Glennis on 420-2801.

FLexercise with Fitness League: Friday 10am - Helensville War Memorial Hall. FLexercise low impact exercise to music incorporating balance and flexibility-move dance enjoy. All ages and abilities. Call Christine 0212602190 Web www.thefitnessleague.org.nz, email rmowat@slingshot.co.nz

Freemasons at Helensville; Regular meetings at The Duke of Albany Lodge, Kowhai Street, Helensville. For more information call Bob Greenough on 0210-829-2345

Groovy Line Dancing Tuesday 9.30am - War Memorial Hall, Helensville. \$6 - Levia Aukino-Uruamo. Ph 022-626-7030

Hana's Group Fitness Classes, small group fitness classes. Pilates, Functional Fitness & Boxing for Fitness held indoors at the Helensville Rugby Clubrooms, 5 x per week. Please contact Hana on 0211623362 or email hanalundon@gmail.com

Helensville Floral Art Club, Third Thursday of the month at Helensville Masonic Lodge, 9 Kowhai Street. All welcome. Contact Cushla 0212-588-979 cushanddez80@gmail.com for more information.

Helensville Healing Rooms, now at outside rooms of River Valley Baptist Church, Fordyce Road Parakai, opposite Parakai Primary School, Every 1st and 3rd Saturday, 11a.m-12p.m. We offer prayer for help with what you need healed, All welcome, no appointment,

no charge, ph 0276-058-225

Helensville Lions Club, meet 2nd Monday of the each month, in the Tennis Club building, 124/164 Rautawiri Road, 6.30pm for 7pm start. Just come along to any meeting to see what we are about - you will be made very welcome. Contact Chris 027-646-3324.

Helensville Railway Museum. 2 Railway Street, Helensville. Open every Sunday 10.30am to 3pm. 09 420 8961, helensvillerailwaystationtrust@gmail.com, www.helensvillerail.org.nz

Helensville River Valley Country Music Club Held 3rd Sunday of the month at Tennis Club Building, Rautawhiri Park. 1pm start. All Welcome Contact Marion 420-8867.

Helensville St John Youth: Ages 5-18 yrs see youth@stjohn.org.nz for more information. Monday 5.30-7pm during school terms, Makiri Street, Helensville. Contact: Carla. carla.lang@stjohn.org.nz

Hot Pool Stretching and Exercise Class: Every Tuesday 8-30-9.30am. Suitable for arthritis sufferers or those wanting to warm up these muscles and stay flexible. Lots of fun; pool noodles available and fully instructed. At Parakai Springs Hot Pools. For more information contact Chrissy on 027-258-2010

Kaipara Memorial RSA. - Dining available from 5.30pm Wed, Thurs, Fri and 11am on Sundays. All welcome at the RSA, 49 Commercial Road, Helensville. Any queries, give me a call, Rex Keane, 027 293 2768

Kaukapakapa St John Youth: Ages 5-18 yrs see youth@stjohn.org.nz for more information. Tuesday 5.30-7pm during school terms, 1015 Kaipara Coast Highway, Helensville. Contact: Caroline 0221-674-823, caroline.thompson@stjohn.org.nz

Kumeu Friendship Club. Friendship New Zealand Inc. is a welcoming social organisation for people living in New Zealand who are retired or semi-retired. Come along and join us on the fourth Thursday of the month at 10am at St. Chad's Church, 7 Matua Rd, Huapai.

Our Village Coffee/Playgroup - Northwest (Find us on Facebook). Social community group for all ages and stages. Everyone welcome along: Parents, caregivers, grandparents, all the whānau, with/without children. Every Thursday 9.30am - 1.00pm St Matthews Church Lounge - 60 Garfield Rd, Helensville. Email: ourvillagenorthwest@gmail.com

SeniorNet Kumeu Inc., Have you ever thought about joining SeniorNet? The Kumeu branch meets in St Chads Church, Huapai, with a Helensville outpost in a private home in Garfield Rd. Entry is free. Why not come along and find out what we have to offer. Contact details: Brian Lacey brian@lacey.nz, 0221-831-811, Nigel Dempster 09-411-9444

South Kaipara Community Patrol, Contact Paul on 021345928. or southkaipara@cpnz.org.nz

Te Awaroa Museum Open Monday - Wednesday 10.30am - 1.30pm 09-420-7881 info@museum.teawaroa.nz www.museum.teawaroa.nz

U3A South Kaipara: 1st Tuesday of the month for general meeting. See What's happening this month column for more information or contact Bev Silvester-Clark. bev.s-c@outlook.com 0274-316-205.

Trade/Professional & Services List

Accountants	ECE Astute Accounting	420-7835	Homekill	Country Meat	021-161-4270/420-3113
Agecare	Craigweil House	420-8277	Ink and Toner	Huapai Copy & Print	09-412-8882
Age Concern Rodney		09-426-0916	JP's	Lindy McDermott	022-049-2871
Beauty Therapy	Beauty Elixir	022-465-0727	Lions Club of Helensville	Chris Clark	027-646-3324
Birthing Centre	Commercial Road, Helensville	420-8747	Market Opportunity	Car Boot/ Garage Sale	021-488-427
Budget Service	Francis	420-7740	Markets	The Village Market	0274-831-542
Builder/Handyman	Dugald Henderson	027-381-9151	Markets	Waitoki Village Market	Gill 420-3301
Business Hub	Northwest Country, Danielle	0204-0027-008	Mechanical Repairs	Helensville Mechanical Services	420-8177
Butcher	River Valley Meats	0212-130-060/0274-833-400	Mechanical Repairs	Parakai Automotive	09-420-7224.
CAB	16 Commercial Road	420-7162	Mower Repairs & Sales	Lifestyle Mowing Machinery	0274-955-948
Carpet & Upholstery Cleaning	Curtis	027-200-5456	MP	Chris Penk	021-0230-6106
Chiropractor	Kaipara Chiropractic Healthcare	420-6224	Paddock Mowing	Tractor mowing with mulcher	0274-669-464
Computer Repairs	Michael - Controlaltrepair	021-251-4138	Pet Spa	Groomville Boutique	021-246-5354
Concreters	Brewis Concrete	021-992-590	Plant Centre	Kaipara Coast Plant Centre	420-5655
Diggers	Helensville Diggers	021-454-793/420-7023	Plumbers	ATL Plumbing Ltd	021-245-9677/420-7868
Dog Grooming	Christine	021-521-303	Plumbers	KPL Ltd	420-9108
Drainage	Alpha Drainage - Scott	022-352-140	Pumps	KPL Ltd	420-9108
Early Learning Centre	Active Explorers	09-222-3277	Pumps	Mid West Pumps	420-7694
Early Learning Centre	Gumboots	09-411-9038	Real Estate	Barfoot & Thompson-Kelly Davison	0274-670-175
Early Learning Centre	Helensville Montessori	420-7181	Real Estate	Burmester Realty	420-8360
Electrician	Sean Gray Electrical	0274-784-396	Real Estate	Prestige - Jana Mills	021-509-990/420-9953
Filtration	KPL Ltd	420-9108	Roofing	KPL Ltd	420-9108
Garden Sheds	Baby Barns	022-075-8283/420-3298	Shuttle Service	Helensville Shuttles	0272-777-339
Gift Baskets	Riverside Crafts - Sarah	0800-831-542	Shower Installation	GSI Ltd	0800-466-5327/420-8777
Gifts & Art	FIGG 44 Commercial Rd	021-488-427/ 420-6026	Storage	J S Storage	021-462-930
Gifts & Clothing	Eleventh Hour - 60 Commercial Road		Typesetting/Photocopying	Huapai Copy & Print	420-9307
Glass Services	Nor-West & Kumeu Glass Services	09-420-8210/0800-825100	Venue Hire	Kaipara Memorial RSA	420-8888
Handyman	Dale Browne	0274-397-519	Your Local Business Book	yourlocalbusinessbook@gmail.com	

HELPING CHANGE LIVES

One Opportunity at a Time

Local mum finds strength, confidence and a future through Outward Bound sponsorship



At Burmester Realty, we believe real estate is about more than property - it's about people, community, and creating real opportunities for growth.

Earlier this year, Jane Burmester, owner of Burmester Realty, sponsored a local mum, Kyra, to attend an 8-day Outward Bound adventure course in Anakiwa, giving her the opportunity to step outside everyday life and rediscover her strength, confidence and goals.

Kyra, a young mum of two, said the experience was nothing short of life changing.

"I am incredibly grateful for this chance as the journey I embarked on at Outward Bound has given me so much momentum in life."

"As a young mum of two, over six years of motherhood my world had started to shrink and a lot of my dreams were quietly filed away for another time."

In November, Kyra travelled to the South Island and found herself sailing through the Marlborough Sounds, scrambling through native bush and becoming part of Huria 731 watch at Outward Bound.

"It was a beautiful reminder of how all my dreams are within reach and how much we are capable of when we work together. Outward Bound is an amazing, supportive community, and I will carry a piece of Anakiwa with me everywhere I go."

Inspired by the opportunity, Kyra trained for and completed her first half marathon before she even stepped onto the wharf at Anakiwa.

"The months leading up to my trip gave me the motivation to push myself. I completed my first half marathon at Outward Bound. It was a life goal I set on my solo and was so cool to complete it the very next day!"

Why Burmester Realty Does This -

Jane Burmester says the reason is simple:
"I believe in people. I believe in second chances, fresh starts and helping people realise what they're capable of. Real estate has given me the ability to give back – and that's exactly what I want to do."

Burmester Realty actively supports local people through:

- Personal development opportunities
- Community sponsorships
- Local fundraising and events
- Giving people a hand up – not a handout



Your Local Real Estate – With a Heart

Whether it's helping someone buy or sell their home, or helping someone reshape their future. Burmester Realty stands for more than just property. We stand for people. We stand for community. We stand for possibility.



Team
BURMESTER
Burmester Realty. Licenced under The REA 2008



Free Appraisals, NO Marketing Fees and Low 2.9% Commission

09 420 8360 | admin@burmester.co.nz | www.burmester.co.nz