

The Helensville Community News

Issue 198 - May 2026

More than a collection of old stuff

We love having visitors at Te Awaroa Museum, Helensville. It's one of the reasons we're here! What people don't get to see is all the hard mahi (work) which goes on in the background. We're talking about the mahi that goes towards saving the stories and photographs of everything from family histories and local organizations, the public events we are asked to participate in, the refurbishing of displays, the maintenance of several old buildings, dealing with the council and various government organizations, plus everything in between.

We get excited when a new item comes to us, but what truly makes it magic is the story which comes along with it. The challenge is to present those stories in a way in which they catch the imagination or send people on a trip down memory lane. Often these visits will provide us with further information, and all that information must be scanned, recorded and archived. If we are given little information, we have first to research the stories ourselves, before being able to use it in the museum.

Last month the Museum was working on an Equine display for the A & P Show. We pulled lovely old images of horses from our photo collection. Some of these were taken at a time when horses were the only mode of road transport. We put together a display for the centennial of the Makarau branch of Rural Women NZ. We had a visit from the Rapana/Hill/Thompson whanau, so out came all the old Parakai School, Helensville School and Kaipara College photos, Kaipara Dairy Company photos, as well as videos, and anything relative we could lay our hands on. We are still working on finding information about the SS Minerva, who plied the waters of the Kaipara. The Kerikeri Steam Trust are restoring her and are eager to gather as much information as they can about her. We have her logbook in our collection, as well as her engine bells. It turns out that one of her many jobs was to serve time as a brothel in the Chatham Islands!

Next up for us is a search through the archives and artefacts to find anything Pengelly or Keane family related. They had a reunion in April. It's a hugely satisfying feeling when you find old photos of whanau which the current family didn't know even existed. It's even more exciting when we find videos. We're connecting our past with our present for all future generations and it's a never-ending ride doing the tedious bits like freezing, scanning and sorting, to finding the gems which make people so happy.

It's always great to have more people on board to help the Museum, you don't need to know our history, but if standing at a photocopier or putting names to photos is your jam, we have the job for you! Come and see us from Monday to Wednesday 10:30 to 1:30 and we'll find you a job.



A group of Helensville people photographed on the stern of the T.S.S. Minerva, returning from the Pahi Regatta, February 1935.

L to R: Arthur West, Mrs. Guildford, Ida Edwards, Connie Nicholls, Mollie West, Wilfrid Jackson, Joan Guildford, Leslie Vercoe, Muriel Tucker, William Coutts, Freda Downer with Merle, Jack Edwards Hilton Venables, Claude Abel. In Centre: Charles West with Arthur Larkin

In this issue...

- Finding her name ~ Pg 3
- What's happening this month ~ Pg 3
- Helensville Lions Autumn Book Fair ~ Pg 4
- Surviving the storm - and the school term ~ Pg 6
- Celebration of Staff milestone at Craigweil ~ Pg 7
- Northwest Country update ~ Pg 8
- Art Centre Helensville ~ Pg 9
- Sayers says it ~ Pg 9
- Hornet: Cautiously Optimistec ~ Pg 10
- Connection update ~ Pg 10
- Kaipara College Principal's Desk ~ Pg 11
- Penk's Pen ~ Pg 12
- The sort of energy policy NZ needs ~ Pg 14
- Tide Chart ~ Pg 16
- Regular events updated ~ Pg 15
- Find a local business and give them your support with the T&P listing ~ Pg 15

Like us on Facebook or visit www.helensvillecommunitynews.co.nz

Helensville Community News

Email: helensville@copyandprint.co.nz

www.helensvillecommunitynews.co.nz

Phone: 420 9307

312 Main Rd, Huapai. P O Box 165, Kumeu

All correspondence should be legible and include writer's name and address.

~ COPY DEADLINE ~ 23RD OF THE MONTH ~

ADVERTISING ENQUIRIES:

Phone: Sarah on 0274-831-542 or email

helensville@copyandprint.co.nz

ADVERTISING RATES (Excl GST):

Advertisement sizes, rates and specifications are as follows:

Black & white business Card size advertisement in the newsletter - \$55.00 per single issue. Double Business Card size Advertisement in the newsletter - \$110.00 per single issue. Low density colour business Card size advertisement in the newsletter - \$80.00 per single issue. Double Business Card size Advertisement in the newsletter - \$160.00 per single issue. The above rates include a listing in the Trade & Professional section on the back page. A listing in this section only is \$10.00 per month. All advertisements will attract a 5% discount if paid at the time of booking, including those for 12 issues if paid in advance. For larger sized advertisements or high density colour please request a quote.

ADVERTISEMENT SPECIFICATIONS:

All adverts supplied must be in one of the following formats:

Corel Draw 12, .jpg, pdf or MS-Word (with any graphics sent as .jpg images as attachments).

The Helensville Community News is published as an independent community newsletter in conjunction with the Helensville Community Website, www.helensvillecommunitynews.co.nz, to inform the residents, ratepayers and visitors of events and proposals that affect the local area.

Circulation 4,500 — pass it on to your friends.

The views and opinions expressed in this newsletter are those of the individual contributors and not necessarily those of the publishers. While we try to ensure accuracy of information, the publishers accept no responsibility for errors or omissions made by individual contributors.

Publishers: Huapai Copy & Print

Finding her name

Names hold stories, connecting generations through history, culture and traditions, but tracing women's names, in particular, can prove to be quite tricky. Throughout much of our history, women have held a secondary status to men - tradition and law limited their access to education, employment and public roles. A woman's identity became intertwined with the men in her life, she is her father's daughter, her husband's wife, (she is Mrs George Rix). Wahine Maori often took or were given anglicised versions of their name, or different names altogether. Over time, identities blurred and connections became harder to follow.

At Te Awaroa Museum we spend a lot of time looking for answers and clues, trying to find family connections for visitors and researchers and connecting the pieces. We can go through school records, photographs, cemetery records and family histories, but sometimes the gems turn up in the social histories.

Women were often the glue that held communities together and those groups can be a great source of information - Women's Division of Federated Farmers, Country Women's Institute, Guides and Brownies, Maori Women's Welfare League, to name a few. These places recorded women as themselves, not as someone's relation - somewhere that a woman's name was her own.



Janet Drinnan

There are, of course, the women who challenged traditions and stood firmly in their own identity through their strength of character; women such as Irapeta Nelson who owned and ran the first Kaipara Hotel; Janet (Grannie) Drinnan who owned the Bridge Hotel in Kaukapakapa; Flora Thirkettle the first sea going woman in the world to be inducted into the Coast Guard; Mary Ellen Keane, owner of Hinemoa Hotel and a life member of the

Auckland Referees Association; Ann Leighton, the first woman veterinarian registered in New Zealand. Each of these women left their mark on the Kaipara in their own way.

This Mother's Day we invite you to be a part of preserving the stories of the women in your life. Ask your Mum to take out the old photos, talk about her past and the people in it, record it on your phone, and make sure the names of those in the photo are written on the back!

Make sure that your mother and your grandmother are saved in history and don't become nameless pictures to be forgotten to history. Once her name is lost, so too is her story.



Flora with her Jack Russells 2000. She bred Corgis and Jack Russells



— YOUR LOCAL RETAIL —
BUTCHER
Fresh sausages, dry cured
bacon, fresh beef, pork &
lamb plus lots more

09 420 3113 | 021 161 4270

— YOUR LOCAL SPECIALISTS FOR —
HOMEKILL
& HUNTING

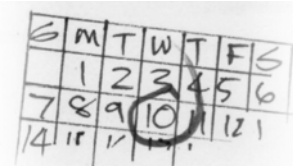
Opening hours
Mon-Fri 7am-6pm | Sat 7am - 12pm
1578 Kahikatea Flat Rd, Kaukapakapa



For all your electrical requirements
0274 784 396

Email: info@seangrayelectrical.co.nz
www.seangrayelectrical.co.nz

What's happening this month



Tuesday, 5 May, U3A Monthly Meeting, 10am – 12pm: Morgan Hancock Osteopath **Topic:** An entertaining and informative talk on hyperkyphosis commonly known as Dowager's Hump and Tech Neck. Guests are very welcome. U3A www.u3a.nz is a national and international volunteer led organisation for retired and semi-retired people committed to lifelong learning and who enjoy interesting company. South Kaipara U3A has more than 60 members and is thriving. There is an informative meeting on the first Tuesday of every month 10am-12pm. There are also a number of smaller interest groups. Guests and new members are very welcome. For enquiries contact Bev Silvester-Clark bev.s-c@outlook.com 'phone 0274 316205

Sunday, 10 May, Mother's Day High Tea in the Parsonage, Silverdale Pioneer Village, 15 Wainui Road, Silverdale, step back in time and treat the lady in your life. \$40 a head, bookings essential see website for details on how to book www.silverdalepioneervillage.co.nz

Sunday, 17 May, Helensville Pink Ribbon Day, The Original Kaipara Tavern, 1pm onwards We'll be starting and finishing at The Original

Kaipara Tavern, heading along Roa Avenue and looping back via the Helensville Riverside Walk. It's an easy 1.5km route (20–30 minutes) that's perfect for all ages, prams, and families. Event Timing: Registration: 1:00pm, Warm-up: 1:25pm, Walk starts: 1:30pm, Finish back at the Tavern: approx. 1:50–1:55pm, Tavern doors open: 2:00pm — and then the Pink Ribbon fun begins! This walk is all about community, connection, and supporting a cause that touches so many. Wear something pink, bring your whanau, and join us for a meaningful start to the afternoon. If you've already purchased a ticket, I'll be sending you an update shortly. For more information go to facebook Helensville Pink Ribbon Day.

Sunday, 17 May, The Village Market, Helensville Showgrounds, Railway St., Helensville, 8.30am – 1pm. A monthly event that takes place on the third Sunday of every month (except for February) at the Helensville A&P Showgrounds. A lively and friendly market that offers a variety of stalls, live music from duo Gillian and Mike, free face painting or hair plaiting for the kids, and delicious food and coffee. You can find fresh local produce and plants, artisan food and preserves, handmade crafts, gifts, collectibles, pre-loved items and more. If you are looking for a fun and relaxing way to spend your Sunday morning, you might want to check out this Village Market. No dogs please with the exception of assistance dogs. Gold coin donation for parking – proceeds to the Helensville/Kaukapakapa scouts and St. John youth. For more information contact sarah@riversidecrafts.co.nz.

Monday, 1 June, Kings Birthday



Helensville Montessori

An Early Learning Centre for children aged from 2 to 6 years.

Where "skillful teachers support children to become confident and competent learners." - *Education Review Office*

And with generous garden spaces for serious running and playing.

Come and see us anytime. We'd love to show you all that Montessori can offer your child.

58 Garfield Road, Helensville. 09 420 7181
www.helensvillemontessori.co.nz and

gsi
 Guaranteed Shower Installations

We specialise in shower installations. Call us for a quote on your shower installation
0800 4 NO LEAKS 420 8777
info@gsi.net.nz gsi.net.nz



09 420 7694

Water Pump Sales & Servicing
 Deep Well & Submersible Specialists



Gift baskets made to order

phone Sarah 0274 831 542
sarah@riversidecrafts.co.nz

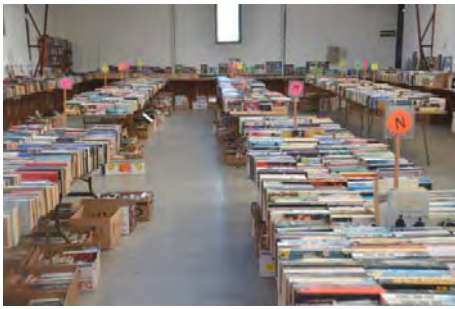
@sarahsgifhampers



Sunday 17 May
A&P Showgrounds
8.30am – 1pm

There will be live music from duo Gillian and Mike,
 Free hair plaiting

Contact Sarah 0274 831 542
sarah@riversidecrafts.co.nz



HELENSVILLE LIONS AUTUMN BOOK FAIR

Saturday 30th May

Sunday 31st May 2026

Helensville A&P Showgrounds

“The Biggest & Best Book Fair in the West!”

The Lions Club of Helensville will once again be holding their May Book Fair at the Helensville A&P Association Showgrounds on the last weekend of May, Saturday 30th and Sunday 31st, opening at 9.00am on Saturday until 4.00pm and again on Sunday 10.00am until 3.00pm.

The last Book Fair held in November raised \$12,180 from the sale of books, for which many thanks. Half the money raised went to Kaipara Good Food, our local Food Bank, for Christmas Kai Packs the remainder went towards helping schools, organizations and individuals in our community that required assistance.

We are still getting many donated books, so there will be plenty of fresh stock to browse through. Books are priced to sell, with nothing over \$2. There is a large selection of children’s and YA books for \$1. Also, we have many jigsaw puzzles, board games, DVDs, CDs, LPs and quality magazines available.

All books have been sorted and categorized, non-fiction is divided into twenty separate sections, fiction is arranged alphabetically by authors, with six special interest groups. Popular authors are grouped together at the end of the hall.

Small donations of books can be left at Burmester Realty, Helensville. For larger lots our shed, which is situated behind the Helensville Gull Petrol Station, is open every Tuesday afternoon between 1.00pm and 3.00pm. Otherwise contact Chris on 027 646 3324, or any other member of the Helensville Lions.

Please note that the last date we are accepting books for this Book Fair is Friday 22nd May. Sorry, but we cannot accept donations at the Book Fair.

EFTPOS Available



HELENSVILLE MECHANICAL
Your trusted local Mechanic

Our Services :

- Servicing
- Warrant of Fitness
- Tyres, all major brands
- Maintenance

Contact Us

☎ (09) 420-8177
✉ service@hellmech.co.nz
🌐 www.helensvillemechanical.co.nz

MECHANICAL SERVICES
HELENSVILLE

Gumboots

Now Enrolling Babies - July Onwards
Limited Space - Don't miss out!!

1157 Peak Rd

The centre of everywhere
Just minutes from Helensville

Ph: 411 9038



#1 HELENSVILLE SALESPERSON 2026*

AWARDED FOR EXCELLENCE, TRUSTED FOR RESULTS
IN HELENSVILLE 5 YEARS IN A ROW



*True as of March 2026

Kelly Davison RESIDENTIAL/LIFESTYLE SALES
027 467 0175 | k.davison@barfoot.co.nz

**BARFOOT
THOMPSON &**
LICENSED REAA 2008

BOUTIQUE GIFTS CLOTHING

60 Commercial Road
Helensville

www.eleventhhourgifts.store | 021 079 5475



Surviving the storm - and the school term.

by Sequoia Thomson, Year 13 Student, Kaipara College

Happy school holidays to everyone involved!

Hopefully, everyone is at home, safe, sound, and warm after Cyclone Vaianu passed through, and is helping out any friends, family, and neighbours who need it.

With gusts exceeding 130km/h, heavy rain, and large swells, some regions were hit harder than others. Auckland escaped relatively well, but the coastal Whakatane district, Bay of Plenty, and Rotorua saw heavier damage and extensive evacuations. Luckily, New Zealanders prepared quickly, emptying supermarkets by Saturday and readying for possible blackouts and property damage.

Though, as casual people, we New Zealanders did seem to confront the storm with a relaxed vibe, as evidenced by an update by the New York Times, which stated that a local Mount Manganui cafe was "overrun by demand for ice cream" - it seems like even in the worst situations, ice cream is always the solution!

On a school-related note, term one finally ended on an early Thursday, much needed by the many exhausted students at my school (including me). Though the term has flown by fast, many of my friends and I have found it has still been very tiring and very, very busy. I myself am rather grateful for a quiet break at home after going so nonstop - somehow, it seems we have managed to survive both school and the storm.

Ball is also coming up soon for our year twelve and thirteen students in late term two, though the location and theme are yet to be revealed ... but no doubt, it will be magnificque. For those who are a bit stuck, shopping for ball dresses can be very hard and expensive, especially online, so I recommend, as a certified thrifter, looking through some local and city op shops for ball dresses. Karangahapa Street has some really high-quality second-hand stores, in which you can get very expensive designer dresses or just well-made dresses from good brands for an affordable price, whilst being of high quality. I personally recommend Paper Bag Princess and Recycle Boutique. My wonderful dress last year was second-hand, and I altered it to fit perfectly.

The PSSP is also soon to have a very exciting camp coming up in the first three days of term two - the 2026 PSSP Hui, which trains our wonderful new PSSP members (including myself) to be able to help, support, and educate Kaipara College students on health issues as best we possibly can. We will be there from Monday to Wednesday, with around five other schools. It is sure to be awesome!

Stay safe, stay warm, and I will see you all again next month.



***Maintenance *Renovations *Cylinders *Roofing
*Spouting *Central Heating *Gasfitting + more...
~ CONTACT US WITH ANY ENQUIRY OR FOR A FREE QUOTE! ~
Ph: 09 420 7868 Adam: 021 245 9677
OR: 0800 285 758 (0800 ATL PLUMBING)
E-MAIL: adamandanita@xtra.co.nz OR:**

ACTIVE EXPLORERS

Come check out our brand-new, purpose built childcare centre.

14 Commercial Road, Helensville, Auckland
P: 09 222 3277 | www.activeexplorers.co.nz

PLANT CENTRE

Specialists in plants for this area
- Vegetables
- Fruit trees
- Natives
- Garden plants
- Design services
- Planting
- Landscaping

Kaipara COAST

SCULPTURE GARDENS

Get inspired and have a relaxed fun family afternoon out. Come on our 1km garden and sculpture trail. Allow 1-2 hours. Garden entrance fees apply.

Plant Centre & Sculpture Gardens

open 7 days 9am to 5pm ph 09 420 5655
1481 Kaipara Coast Highway,
4km north of Kaukapakapa Village
www.kaiparacoast.co.nz

HELENSVILLE DIGGERS

Great Operators at **GREAT** Prices

Tip Trucks and Excavators

You want it we do it!!!

DON'T DELAY PHONE TODAY!

Peter or Clifton

021 454 793

021 454 780

A/H: 09 420 7023



Craigweil House Celebrates Dedicated Staff Milestone



Deb Presland

At Craigweil House, it's not only the residents who are at the heart of our community—it's also the incredible staff who make a difference every single day. This month, our team came together to celebrate a truly special milestone, recognising the dedication and commitment of one of their own and a long-time local of the greater Helensville and Parakai community.

A heartfelt thank you goes to **Deb Presland**, who reached an outstanding 30 years of

service with Craigweil House. Over the years, Deb has been an integral part of so many residents and their families. Today she remains very much a familiar and much-loved presence within the facility, building meaningful connections with both residents and

colleagues alike. Her compassion, reliability, and unwavering support have helped shape the warm and welcoming environment that Craigweil House is known for.

Celebrating long service milestones like this is a reminder of the strong sense of community within Craigweil House. Staff dedication plays a vital role in creating a place where residents feel safe, cared for, and truly at home.

Congratulations, Deb, and thank you for your incredible contribution over the past three decades. Your commitment is deeply appreciated and truly inspiring to all.



Deb with the managers of Henrikwest Management Ltd



Deb with the staff of Craigweil House home and Hospital



Helensville Birthing Centre

TE PUNA WHANAU KI TE AWAROA

Helensville Birthing Centre is your local community facility. It provides a free service for women who choose to give birth in a low-tech environment. Alternatively, women who give birth in hospital can then transfer to us for the opportunity to rest and establish breastfeeding.

You are welcome to call in and have a look around, or browse our facilities online.




53-65 Commercial Road, Helensville
Ph (09) 420 8747

Email bookings@helensvillebirthingcentre.co.nz

www.birthcentre.co.nz

KPL

KUMEU PLUMBING LTD
EST 1974

-  plumbing
-  drainage
-  roofing
-  water pumps
-  water filtration
-  gas fitting
-  woodfires
-  solar heating
-  pool & spa

Ph. 420 9108 Fax. 412 7555

Email. info@kpl.co.nz Web. www.kpl.co.nz

156 Main Road, PO Box 128, Kumeu, Auckland 0841



Backing Business and Community Across North West Auckland

Big things are quietly taking shape across North West Auckland, with local businesses and community groups working together to build a stronger, more resilient future.

Now that we have launched PerformIQ, New Zealand’s most powerful business performance tool, we are going to step it up even further. We are now calling for 15 businesses to join our first cohort, and receive 12 months of business coaching through their PerformIQ subscription. The cohort will receive structured support, including regular workshops, coaching and peer connection. Delivered with the support of local advisors, the programme is designed to strengthen decision-making and lift long-term performance across the area.

There is also positive progress on flood resilience for businesses in Kumeu, Huapai and Waimauku. Engineers have now completed and received approval for a Business Flooding Toolkit proposal in collaboration with Auckland Council’s Healthy Waters team. Funding has been confirmed for the majority of the project, with further funding being sought to support on-site assessments for local businesses. Works are expected to begin later this year, providing practical tools to help businesses prepare for future flooding events.

The second tourism workshop brought together local operators to continue shaping a Destination Management Plan for the wider area. The goal is simple: build a clear picture of what the region offers and how visitors can be encouraged to explore more. From July, a new tourism-focused membership option will be introduced, ensuring fees are directed specifically to marketing and maintaining a dedicated tourism website. This collective approach is expected to deliver stronger results than businesses working alone.

Community spirit is also front and centre with the return of the Te Awaroa Helensville Santa Parade to local leadership. Plans are already underway for the 2026 event, with sponsorship opportunities now open to help bring the parade back to the main road and into the heart of town. Please reach out to General Manager, Danielle Hancock, to register your interest.

Together, these initiatives show what can be achieved when businesses, councils and communities work in partnership — building resilience, supporting growth, and keeping the North West a great place to live, work and visit.

*General Manager, North West Country Inc.
manager@northwestcountry.co.nz*



BEAUTY ELIXIR

Helensville with Maria Schofield

Mob: 022 465 0727



Save The Date

Helensville Christmas Parade



Friday 27th November @ 6pm

Commercial Rd Helensville

Come and support a
Community Event!

North West
COUNTRY
BUSINESS ASSOCIATION

For information please call
(09) 835 9000



BREWIS CONCRETE
Quality Concreters... NO BULL!

Aaron Brewis
Mob: 021 992 590

Solid advice & workmanship for over 20 years



Tractor mowing with mulcher

Phone Nick on
0274 MOWING
(0274 669 464) *Paddocks or Sections*

ARTcentre HELENSVILLE

Our members exhibition 'Something Old Something New' is on from 22nd April – 16th May, come see a show of historical and new work combined!

Our next exhibition is Patricia Brickell, sister in-law to late Barry Brickell well known NZ potter. Patricia will be showing up to 40 Impressionist paintings spanning the years of her art practice. The show will flow through gallery and hall spaces enveloping the Art Centre with texture, mark making and vibrant colours. A painterly moment not to miss, please feel welcome to attend the opening event May 22nd 5-7pm.



Workshops continue as a course or drop-in sessions, please email manager@artcentrehelensville.org.nz for more information. We have some exciting new workshops coming please keep an eye out on our website or Facebook page, alternatively sign up to our monthly newsletters scroll down on the front page of our website artcentrehelensville.org.nz and fill in your details.

Painting and drawing with Mike Rowland 6-week course 1st May – 5th June 11-1 DISCOUNT \$160. Drop in sessions \$30

Raranga Flax Weaving with Maria Kaka 30th April – 8th June Thursday's 11-1 \$80 for 8 weeks. Please email the manager for drop in session enquiry.



FREE art and creative group every Wednesday 11-1 'Gas Bag' at the Art Centre, BYO art and craft, tea and coffee provided.

Opportunities for artists! Our gallery is available to hire for solo and group exhibitions, and our outdoor sculpture garden is open for proposals. Please see our website for information under gallery hire. If you are an artist and interested in exhibition with us, get in touch.



Sayers says it

By Rodney Councillor Greg Sayers. The recently announced "Auckland Deal" between Prime Minister Christopher Luxon and Auckland Mayor Wayne Brown aims to better coordinate infrastructure, housing, transport, and economic development across the region. While the agreement has been presented as a way to boost Auckland's productivity, questions are already being raised about its immediate impact—particularly for communities in Rodney.

A key component of the Auckland Deal includes an Infrastructure and Transport strategy. This is an Auckland 30-year plan focusing on projects like the North-West Raid Transport (busways), Botany-to-Airport link, and Mill Road (Manukau).

However, critics note several omissions, including the lack of passenger rail extensions to Huapai or Helensville and no clear commitment to improving rural roads.

In fact, reading the fine print the agreement specifies that no additional funding is expected from central government budgets for the first three years of the Deal. That leaves one wondering just how much of a difference the Auckland Deal will really make for Rodney's residents and ratepayers.

The Deal does not ease congestion on State Highway 16 through Kumeu by accelerating building of the bypass, so traffic bottlenecks will remain a daily frustration with still no clear timeline for relief.

Another notable exclusion is the government's proposed 4% rates cap. That means the Auckland Council can still increase rates well above the rate of inflation.

The New Zealand government promised to introduce a 2% to 4% cap on annual council rate increases, starting in 2027 and fully implemented by 2029. While popular with voters, the cap faced pushback from Auckland Council worried about infrastructure and service cuts.

Personally I agree with a rates cap. Continued large rates increases are simply not sustainable. With rising living costs already placing pressure on households, and without immediate funding or stronger cost controls, the Auckland Deal risks being seen as more aspirational than practical.



NOR-WEST & KUMEU GLASS

nwkg@xtra.co.nz
9a Weza Lane, Kumeu

- Residential glass repairs
- Automotive glass repairs (windscreens/side windows/rear screens/stone chips)
- Commercial glass repairs (shop fronts)
- Cat/Dog doors (supply & install)
- Glass cutting onsite
 - Splashbacks
 - Mirrors
 - Table tops
- Picture frames
- Double glazing

We also handle insurance claims with your preferred insurance company.

We are also Massey Glass and our services extend all over West Auckland

Give us a call today!! 09 420 8210 / 0800 825 100

Hornets: Cautiously Optimistic

The outlook is looking positive; we may have done it!

The yellow legged hornet (YLH) incursion, that was first detected last year, is coming to the end of the current season. Like many insects, the YLH has a defined lifecycle; meaning its activity, behaviour and reproduction is regulated by the seasons. At the beginning there were many unknowns, we didn't know how the YLH would adapt to New Zealand's climate and environment; this meant that there wasn't a playbook that we could follow. We had a good idea how it would progress but were uncertain about when. Developments could be weeks ahead of expectations. We seemed to be closer to southern Europe rather than the cooler northern climes of UK and France in development. A reminder of the lifecycle of YLH:

- A mated queen emerges from hibernation in early spring
- She establishes a small embryo nest, usually low to the ground and starts raising workers
- This nest develops into the primary nest roughly the size of an iceberg lettuce, through spring and early summer
- The colony builds a secondary nest, high up in trees, in mid-summer, they use both nests
- Late summer/autumn drones (boys) emerge and disperse away from the nest in search of a mate
- Weeks later, gynes (virgin queens) emerge
- Gynes mate and then hibernate over winter to emerge and establish new colonies in the spring

We had seen drones, some of which had travelled significant distances, but importantly no gynes had been identified in traps or any of the nests examined in the laboratory. This distinction is important, if queens had emerged, mated and then hibernated we would be ramping up the response next season.

It is for this reason that I'm cautiously optimistic that we are on the right track. I have been on the Organism Management Team (Hornet Death Squad) and have not killed a nest in over three weeks. At the time of writing this, we also haven't seen a hornet in two weeks. Absence of evidence doesn't prove evidence of absence, but this is where we'd hoped we'd be – looking for hornets and not finding them.

Some may say that they could be anywhere and that we could have missed them, but the teams that have gotten us this far are still setting traps, observing traps and beehives, setting and observing Vespex poison stations with the same dedication that they have since spring.

We mustn't be over-confident; we must remain vigilant and ensure that there aren't any hornets wherever we may be. While it could be possible that a small or weak nest hasn't been detected, the search will continue until we can be sure that they are eradicated. It is important therefore that we all continue to look for hornets, even if it is unlikely we'll find any. We need to be sure that they have been eradicated from the Shore and that they haven't been accidentally transposed elsewhere in New Zealand. The teams have been working so diligently, competing with each other and themselves to be the best at their allotted tasks. I am proud of everyone on the team for where they've gotten us thus far. Also, the residents of Glenfield and Auckland who have been very supportive and helpful with the active response, and everyone else in Aotearoa who has monitored their gardens and neighbourhood.

Report suspected sightings of hornets or their nests

You can make reports:

- by calling our exotic pest and disease hotline on 0800 809 966
- by emailing us at info@mpi.govt.nz
- online at report.mpi.govt.nz – if you use this method, select the 'suspected yellow-legged hornet' option from the dropdown list.

Ensure you give your location when making reports.

Ken Brown; Beekeeping Tutor with Land Based Training Ltd. & President of Auckland Beekeepers Club



Connection update

**CONNECTION, Shop 3,
Helensville Railway Station, next to
The Shoppe and Ginger Crunch café.**



Regular events:

Wednesday Raranga/flax weaving - 10.30am - 2.30pm, \$20 for a 2 hour session, Make puti puti (flowers) or kono (basket). Contact Heather 0220366985

Kawakawa Balm workshops (evenings) - register your interest. Contact Heather 0220366985.

Friday Sewing Circle - 10am to 1pm, \$10 for a 2 hour session. Bring your machine and your mending or a project. Chrissy 0274 671843.

Room available for hire: Acoustic music practice, Workshops, Meetings, Interest groups, Celebrations, Exhibitions etc. Contact Heather 0220366985.

End of Life Doula information series.

FAMILY LEAD FUNERALS

As escalating costs impact many families this information session aligns with the resurgence of family and community care at end of life and beyond.

Introducing the organisations Death without Debt and ELDA (End of Life Doula Alliance Aotearoa).

Date: Saturday 16th May, 10am.

Venue: Connection, Shop 3, Helensville Railway Station (next to The Shoppe and Ginger Crunch café).

Cost: \$15

Contact: ph/text Heather 0220366985



**LIFESTYLE MOWING
MACHINERY**



LIFESTYLE MOWING MACHINERY

"We will put the fun back into mowing"

- * Quality brand mowers & ride ons
- * Unparalleled service & Support
- * Large Product range

Come in and see us today!

8 Stevens Lane, Waitoki

Or

Call us on 0274 955 948

www.moadoc.co.nz



Principal Jane Coup

From the Kaipara College Principal's Desk

Kaipara College: We Are a Strong School

Strength is not about being perfect or having everything figured out. It is about knowing who we are, holding high expectations for our students and akonga, and genuinely believing that every student who walks through our gates has something to offer and somewhere to grow.

That growth happens in the classroom. That is where it starts, and it is built slowly, through consistent effort and a willingness to keep showing up.

For our senior students, this is an important moment in the year. Most will have completed their first standard and results are beginning to come through. I encourage you to sit with those results honestly. Not to judge yourself by them, but to use them. What is working? What needs attention? This is the time to set goals, to look clearly at where you are and decide where you want to go next.

Part of that is learning to fail well. I think this matters more than we sometimes realise. The students who are the most successful are not the ones who get everything right. They are the ones who look at what went wrong and ask what they can learn from it. That takes honesty and it takes courage.

It also takes courage to ask for help. Asking questions is a sign of strength, not weakness, and now is exactly the right time to be asking them. Please do not wait until the end of the year. There is still plenty of time to shift things, but that window is not unlimited. Your teachers are here and they want to hear from you.

Our teachers are doing the same work. This term our focus as a staff is on identifying excellent teaching practice and making sure it is consistent across our school. That means looking carefully at our data, being responsive to the students in front of us, creating classrooms that reflect who our students are, and building relationships where real learning can happen.

In practical terms, that looks like teachers coming together to look at student work, to share what is going well in their classrooms, and to ask hard questions about what could be better. It means professional conversations grounded in evidence rather than assumption. It means teachers observing each other, learning from each other, and holding each other to the same high standards we ask of our students. That kind of collective commitment is what lifts a school, and it is work we take seriously.

This commitment to growth is precisely what leads to angitūtanga (success), and we have seen it shine through our students recently. Beyond the classroom, our young people have been demonstrating that same "Kaipara strength" in our community and across the country. Our boys' surfing team—largely made up of our junior students—placed fifth at the New Zealand School Surfing Festival at Maukatia Bay, while our Kapa Haka group delivered a powerful performance at the Te Tai Tokerau Festival in Kaitiāia, a wonderful step on their journey toward Nationals in June.

Equally heartening was a student-led fundraiser that raised nearly \$600 for the Starship Foundation. In these challenging economic times, seeing our students look outward to help others

is a true testament to the character we strive to build here. We are deeply grateful to all the families who supported this cause.

We look forward to continuing to share the story of Kaipara College with our community. Follow us on Facebook and Instagram to see the latest from our school. Facebook: facebook.com/KaiparaCollegeHelensville Instagram:



@KAIPARACOLLEGE



Kaipara College Boys Surf Team.



Kaipara College Shekinah Lio Nautu performing at the Te Tai Tokerau Festival in Kaitiāia.

*Te WAKA o Kaipara: Navigate to Success
Te WAKA o Kaipara: Eke panuku, eke Tangaroa*



Chris Penk
MP for Kaipara ki Mahurangi

Here to help
134 Main Road, Huapai • christopherpenk
chris.penkmp@parliament.govt.nz • 09 412 2496



National
Authorised by Chris Penk, 134 Main Road, Huapai.

COME VISIT US!
WE ARE LOCATED NEXT TO PARAKAI SPRINGS



Discover a warm and caring home, nestled within the Kaipara Coast and Parakai's geothermal waters.

Rest Home • Hospital • Day Stays



Craigweil House
Home & Hospital
FEEL AT HOME WITH FAMILY



HENRIKWEST
CARE GROUP

09 420 8277 | 143 Parkhurst Rd, Parakai | info@craigweilhouse.co.nz

BUYING OR SELLING PROPERTY?

Jana Mills

021 509 990
jana@prestigerealestate.co.nz



www.prestigerealestate.co.nz

janamillsrealestatespecialist

Prestige
Real Estate International Ltd
Licensed REAA2008



*From inspiration
to installation*

LOCALLY TRUSTED IN
NORTH WEST FOR 30 YEARS

**NORTH WEST
FLOORING XTRA**

10 Shamrock Drive,
Kumeu

P: (09) 412 8188
E: kumeu@flooringxtra.co.nz

National  **From Penk's
Pen** CHRIS PENK – MP

What makes our local community special

By Chris Penk, MP for Kaipara ki Mahurangi

As the weather begins to turn and we feel the chill of the shifting seasons, it serves as a timely reminder of both the rugged beauty and the enduring strength of our district. We recently saw this first-hand with the looming threat of Cyclone Vaianu. While our area was thankfully spared major damage or disruption, I was incredibly encouraged by how swiftly our community responded.

Seeing three civil defence centres rapidly organise emergency shelters before the weather even hit was a brilliant display of local readiness. My sincere thanks go out to the dedicated volunteers and the local board who brought this together. With heavy rain events continuing to test areas across the country, having these common sense plans in place is absolutely vital.

That same local heart was on full display at the recent charity boxing match in Helensville that I had the pleasure of contending in. Grassroots events like these remind me of how lucky we are to live in such tight-knit communities that are always willing to step into the ring to help one another when the need arises.

Speaking of local momentum, many of you will have noticed the permanent speed signs now up on the new road connecting Waimauku and Huapai. While it is easy to acknowledge the lack of planning from previous years, seeing this infrastructure operational represents the tangible progress we've been pushing for. It is a long-awaited game changer for our local network, though there is still more to be done.

Taking our local voice to the Beehive remains my top priority, especially as I step into my new executive portfolios of Defence, GCSB, NZSIS, and Space. Working alongside my Cabinet colleagues, it is fulfilling to ensure our local values are reflected on the national stage. This was particularly poignant during recent ANZAC commemorations. It was deeply moving to see so many poppies around our electorate, proving that our community steadfastly honours the sacrifice of our armed services. It is a point of great pride that recent legislative changes now formally encompass those who fought from 1966 onward, aligning our national record with the honour we owe our modern veterans. We will remember them.

There is always more to do, but I remain delighted by the forward strides we are making together. I look forward to catching up with many of you out and about around the electorate. Please don't hesitate to reach out to my Kumeu office if my team or I can be of assistance.

Congratulations Chris Penk

The Helensville Community News has great pleasure in congratulating our local MP Chris Penk following the recent announcement by the Prime Minister that "Having successfully delivered significant reforms from outside Cabinet, Chris Penk will now join Cabinet, picking up Defence, GCSB and NZSIS, and Space portfolios. Chris' time in the NZDF leaves him well placed to lead the work our Government has done in raising the status and capability of our armed forces."



Next month the CAB article will cover the important issues relating to migrant exploitation covering:

When Work Isn't Fair

Understanding migrant exploitation in New Zealand — and what you can do if it happens to you or someone you know.

What does exploitation look like?

Exploitation can take many forms, and it isn't always obvious at first. Some workers may feel pressured to accept poor treatment because they are worried about their job or visa.

Examples of exploitation can include:

- Bullying, intimidation, or harassment
- Employers taking passports or travel documents
- Being charged excessive amounts for food or accommodation
- Being forced to live in overcrowded or substandard housing
- Not being paid correctly—or not being paid at all
- Being asked to pay money in exchange for getting or keeping a job
- Threats against the worker or their family members

If any of these situations occur, it's important to know that this behaviour is illegal and support is available.

Speaking up and getting help

A visa designed to protect workers

Support while finding a new path

A new law protecting workers' wages

Knowing your rights matters

Need more tips? Contact CAB for free, confidential info and

advice on freephone **0800 367 222**, online at **cab.org.nz** (send a message or speak with a volunteer on live chat), or visit one of our eight CAB locations around the North Shore & Rodney: **cab.org.nz/find-a-cab/**.

CAB Helensville Location:
Office Hours: Mon–Fri : 10am–1pm, Sat: 10am–Noon.
 JPs are available on these days.





On-Site Computer Repair Services

- Laptop and desktop repairs
- Home and office I.T support
- Data recovery and backups
- Virus removals and security
- Any general computer issues

Contact Michael today
info@controlaltrepair.com
Phone: 021-251-4138

www.controlaltrepair.co.nz



Book your canine companion a pampering online at
www.groomville.co.nz

44 Garfield Road, Helensville

M: 021 246 5354 E: groomvilleltd@gmail.com

FULL GROOMS * MINI GROOMS * BATHING * DESHEDDING

Premier Aesthetics

Botox • Dermal Filler • Lip Fillers • Laser





83 Commercial Rd, Helensville

Book online or call 021 08186793

Membership options available

www.premieraesthetics.co.nz



Why New Zealand needs an energy policy grounded in reality

By Simon Court, ACT MP

If you've watched the northwest grow over the past few years, you'll know one thing: growth needs energy.

More houses in Kumeu. More businesses in Huapai. Industry pushing further out of Auckland. None of it works without power that's reliable and affordable. Right now, that's under pressure.

We've seen what happens when energy policy gets it wrong. Prices rise. Supply tightens. Businesses hold back instead of hiring and expanding.

Energy doesn't just appear. It has to be built. New Zealand has the resources, hydro, geothermal, wind, solar, gas, and coal. The issue isn't what we have, it's whether we can actually use it.

For years, we've made it harder to build. Banning offshore oil and gas exploration shut the door on future supply and sent investment elsewhere. That decision still shows up in higher prices and tighter margins for businesses today.

You can see the effect. Some large energy users are scaling back because they can't lock in power at a price that works. That's jobs, wages, and local investment on the line.

At the same time, projects that would add supply are slowed down or stopped altogether. Councils say they want renewable energy, then load projects with conditions that add cost and delay. Fewer projects get built, and prices stay high. That's the problem ACT is fixing. We've already taken practical steps.

New National Policy Statements for infrastructure, electricity networks, and renewable energy are making it easier to get projects approved. It's now simpler to consent new generation and connect it to the grid.

We've also made it clear in law that thermal generation, including gas and coal, is allowed. That keeps the system stable when renewable supply drops.

Next comes the bigger change. The RMA replacement laws will pass this term. They will cut through red and green tape and set clear limits so projects can be approved faster and with more certainty. That means more energy coming on stream sooner.

We're also improving security of supply. The LNG import terminal will be contracted in the next few months. That gives New Zealand a back-up in dry years when hydro lakes are low. Instead of asking businesses to cut back, we'll have a plan to keep things running.

You can already see the difference. Committing to LNG has lowered the cost of future electricity contracts, before anything is built. That's what practical policy delivers. More supply coming on. More certainty for investors. Fewer delays getting projects off the ground.

And the result people care about is straightforward: power that's there when you need it, at a price that doesn't keep climbing.

ACT in Government is focused on that.

Keeping the lights on. Making it easier for businesses to grow. Taking pressure off household bills.

That's how you build a country that works in the real world.



- Business Set up Structure
- Business Accounting, Taxation and Advice
- Personal Accounting and Taxation Advice
- Management Accounts
- Board Room available for Hire

09 420 7835 or Mob 027 284 3849

ECE Astute Accounting
69b Mill Road, Helensville
www.eceastuteaccounting.co.nz

SHELLY BEACH TIDE CHART

| Date | High Water Shelly Beach | Sun Rise | Sun Set |
|----------|-------------------------|----------|---------|
| May '26 | | | |
| 1 Fri | 1017 4.0 2240 | 0659 | 1735 |
| 2 Sat | 1053 3.9 2315 | 0700 | 1734 |
| 3 Sun | 1126 3.9 2348 | 0701 | 1733 |
| 4 Mon | 1158 3.8 - | 0702 | 1732 |
| 5 Tue | 0020 3.9 1231 | 0703 | 1731 |
| 6 Wed | 0053 3.8 1306 | 0704 | 1730 |
| 7 Thu | 0128 3.7 1346 | 0705 | 1729 |
| 8 Fri | 0209 3.6 1431 | 0705 | 1728 |
| 9 Sat | 0258 3.5 1526 | 0706 | 1727 |
| 10 Sun | 0357 3.4 1631 | 0707 | 1726 |
| 11 Mon | 0502 3.4 1739 | 0708 | 1725 |
| 12 Tue | 0606 3.5 1843 | 0709 | 1724 |
| 13 Wed | 0706 3.7 1943 | 0710 | 1724 |
| 14 Thu | 0803 3.9 2039 | 0710 | 1723 |
| 15 Fri | 0857 4.0 2132 | 0711 | 1722 |
| 16 Sat | 0950 4.1 2222 | 0712 | 1721 |
| 17 Sun | 1041 4.2 2311 | 0713 | 1720 |
| 18 Mon | 1131 4.1 - | 0714 | 1720 |
| 19 Tue | 0000 4.2 1222 | 0715 | 1719 |
| 20 Wed | 0049 4.1 1314 | 0715 | 1718 |
| 21 Thu | 0141 4.0 1409 | 0716 | 1718 |
| 22 Fri | 0236 3.9 1508 | 0717 | 1717 |
| 23 Sat | 0336 3.7 1610 | 0718 | 1716 |
| 24 Sun | 0438 3.7 1711 | 0718 | 1716 |
| 25 Mon | 0538 3.6 1809 | 0719 | 1715 |
| 26 Tue | 0634 3.6 1905 | 0720 | 1715 |
| 27 Wed | 0728 3.7 1959 | 0721 | 1714 |
| 28 Thu | 0818 3.7 2048 | 0721 | 1714 |
| 29 Fri | 0905 3.7 2133 | 0722 | 1713 |
| 30 Sat | 0947 3.8 2214 | 0723 | 1713 |
| 31 Sun | 1027 3.8 2252 | 0723 | 1713 |
| June '26 | | | |
| 1 Mon | 1104 3.7 2327 | 0724 | 1712 |
| 2 Tue | 1140 3.7 - | 0725 | 1712 |
| 3 Wed | 0001 3.9 1215 | 0725 | 1712 |
| 4 Thu | 0036 3.8 1253 | 0726 | 1711 |
| 5 Fri | 0112 3.8 1332 | 0726 | 1711 |



Contact us now for your storage needs

71 Mill Rd, Helensville
www.jsstorage.co.nz

Email: info@jsstorage.co.nz
Phone: 021 462 930



Regular Events

60 Plus, Held the last Thursday of each month, 10am morning tea provided, a great opportunity to meet others in a relaxed friendly atmosphere. Held at Magnify, 118 Commercial Rd, around the back, downstairs. (There is a ramp) Jocelyn Read 0211-726-547.

Al-Anon Family Groups can help. Free lunchtime meeting every Wednesday, 12.30 pm in small office at rear of carpark Magnify, 118 Main Road, www.al-anon.org.nz. Chris K 021-157-1692

Aqua Aerobics - Low impact exercises to improve your health - and wellbeing. Classes: Mon, Wed, Fri, 9am - 10am, held in the outdoor pool at Parakai Springs Hot Pools all year except public holidays. Cost: \$2 per class, \$7 pool entry for non-cardholders. Contact Ruth on 0210-2277-481 for more details.

Car boot, garage sale market. \$15 per stall. 2nd Saturday of the month, 8.30am to 12.30pm. Positioned by the bollards up by the street footpath, 40 Commercial Road, beside WINZ. Enquiries to 021 488 427

Citizens Advice Bureau: Helensville, is open Monday - Friday from 10am to 1pm at 16 Commercial Rd, Helensville. JPs are always available. Come for information and advice.

Diabetes & Arthritis Group - First Monday in the month unless it's a public holiday. Held at the Anglican-Methodist Church, 60 Garfield Road, Helensville, from 10am to 12pm. Morning tea provided. Speaker and fun times. Contact Shirley on 420-6501 or Glennis on 420-2801.

Freemasons at Helensville; Regular meetings at The Duke of Albany Lodge, Kowhai Street, Helensville. For more information call Bob Greenough on 0210-829-2345

Groovy Line Dancing Tuesday 9.30am - War Memorial Hall, Helensville. \$6 - Levia Aukino-Uruamo. Ph 022-626-7030

Hana's Group Fitness Classes, small group fitness classes. Pilates, Functional Fitness & Boxing for Fitness held indoors at the Helensville Rugby Clubrooms, 5 x per week. Please contact Hana on 0211623362 or email hanalundon@gmail.com

Helensville Floral Art Club, Third Thursday of the month at Helensville Masonic Lodge, 9 Kowhai Street. All welcome. Contact Cushla 0212-588-979 cushanddez80@gmail.com for more information.

Helensville Healing Rooms, now at outside rooms of River Valley Baptist Church, Fordyce Road Parakai, opposite Parakai Primary School, Every 1st and 3rd Saturday, 11a.m-12p.m. We offer prayer for help with what you need healed, All welcome, no appointment, no charge, ph 0276-058-225

Helensville Lions Club, meet 2nd Monday of the each month, in the Tennis Club building, 124/164 Rautawiri Road, 6.30pm for 7pm

start. Just come along to any meeting to see what we are about - you will be made very welcome. Contact Chris 027-646-3324.

Helensville Railway Museum. 2 Railway Street, Helensville. Open every Sunday 10.30am to 3pm. 09 420 8961, helensvillerrailwaystationtrust@gmail.com, www.helensvillerrail.org.nz

Helensville River Valley Country Music Club Held 3rd Sunday of the month at Tennis Club Building, Rautawhiri Park. 1pm start. All Welcome Contact Marion 420-8867.

Helensville St John Youth: Ages 5-18 yrs see youth@stjohn.org.nz for more information. Monday 5.30-7pm during school terms, Makiri Street, Helensville. Contact: Carla. carla.lang@stjohn.org.nz

Hot Pool Stretching and Exercise Class: Every Tuesday 8-30-9.30am. Suitable for arthritis sufferers or those wanting to warm up these muscles and stay flexible. Lots of fun; pool noodles available and fully instructed. At Parakai Springs Hot Pools. For more information contact Chrissy on 027-258-2010

Kaipara Memorial RSA. - Dining available from 5.30pm Wed, Thurs, Fri and 11am on Sundays. All welcome at the RSA, 49 Commercial Road, Helensville. Any queries, give me a call, Rex Keane, 027 293 2768

Kaukapakapa St John Youth: Ages 5-18 yrs see youth@stjohn.org.nz for more information. Tuesday 5.30-7pm during school terms, 1015 Kaipara Coast Highway, Helensville. Contact: Caroline 0221-674-823, caroline.thompson@stjohn.org.nz

Kumeu Friendship Club. Friendship New Zealand Inc. is a welcoming social organisation for people living in New Zealand who are retired or semi-retired. Come along and join us on the fourth Thursday of the month at 10am at St. Chad's Church, 7 Matua Rd, Huapai.

Our Village Coffee/Playgroup - Northwest (Find us on Facebook). Social community group for all ages and stages. Everyone welcome along: Parents, caregivers, grandparents, all the whānau, with/without children. Every Thursday 9.30am - 1.00pm St Matthews Church Lounge - 60 Garfield Rd, Helensville. Email: ourvillagenorthwest@gmail.com

SeniorNet Kumeu Inc., Have you ever thought about joining SeniorNet? The Kumeu branch meets in St Chads Church, Huapai, with a Helensville outpost in a private home in Garfield Rd. Entry is free. Why not come along and find out what we have to offer. Contact details: Brian Lacey brian@lacey.nz, 0221-831-811, Nigel Dempster 09-411-9444

South Kaipara Community Patrol, Contact Paul on 021345928. or southkaipara@cpnz.org.nz

Te Awaroa Museum Open Monday - Wednesday 10.30am - 1.30pm 09-420-7881 info@museum.teawarora.nz www.museum.teawarora.nz

U3A South Kaipara: 1st Tuesday of the month for general meeting. See What's happening this month column for more information or contact Bev Silvester-Clark. bev.s-c@outlook.com 0274-316-205.

Trade/Professional & Services List

| | | |
|---|--|-----------------------------|
| Accountants | ECE Astute Accounting | 420-7835 |
| Agecare | Craigweil House | 420-8277 |
| Age Concern Rodney | | 09-426-0916 |
| Beauty Therapy | Beauty Elixir | 022-465-0727 |
| Beauty Therapy | Premier Aesthetics | www.premieraesthetics.co.nz |
| Birthing Centre | Commercial Road, Helensville | 420-8747 |
| Budget Service | Francis | 420-7740 |
| Business Hub | Northwest Country, Danielle | 0204-0027-008 |
| CAB | 16 Commercial Road | 420-7162 |
| Carpet & Upholstery Cleaning | Curtis | 027-200-5456 |
| Chiropractor | Kaipara Chiropractic Healthcare | 420-6224 |
| Computer Repairs | Michael - Controlaltrepair | 021-251-4138 |
| Concreters | Brewis Concrete | 021-992-590 |
| Diggers | Helensville Diggers | 021-454-793/420-7023 |
| Drain Unblocking | ClearFlow Drain Unblocking | 021-223-1513 |
| Early Learning Centre | Active Explorers | 09-222-3277 |
| Early Learning Centre | Gumboots | 09-411-9038 |
| Early Learning Centre | Helensville Montessori | 420-7181 |
| Electrician | Sean Gray Electrical | 0274-784-396 |
| Filtration | KPL Ltd | 420-9108 |
| Flooring | North West Flooring Xtra, 10 Shamrock Drive, Kumeu | 09-412-8188 |
| Gift Baskets | Riverside Crafts - Sarah | 0274-831-542 |
| Gifts & Art | FIGG 44 Commercial Rd | 021-488-427/420-6026 |
| Gifts & Clothing | Eleventh Hour - 60 Commercial Road | |
| Glass Services | | |
| | Nor-West & Kumeu Glass Services | 09-420-8210/0800-825100 |
| Handyman | Dale Browne | 0274-397-519 |

| | | |
|----------------------------------|----------------------------------|------------------------|
| Homekill | Country Meat | 021-161-4270/420-3113 |
| Ink and Toner | Huapai Copy & Print | 09-412-8882 |
| JP's | Lindy McDermott | 022-049-2871 |
| Lions Club of Helensville | Chris Clark | 027-646-3324 |
| Market Opportunity | Car Boot/ Garage Sale | 021-488-427 |
| Markets | The Village Market | 0274-831-542 |
| Markets | Waitoki Village Market | Gill 420-3301 |
| Mechanical Repairs | Helensville Mechanical Services | 420-8177 |
| Mechanical Repairs | Parakai Automotive | 09-420-7224. |
| Mower Repairs & Sales | Lifestyle Mowing Machinery | 0274-955-948 |
| MP | Chris Penk | 021-0230-6106 |
| Paddock Mowing | Tractor mowing with mulcher | 0274-669-464 |
| Pet Spa | Groomville Boutique | 021-246-5354 |
| Plant Centre | Kaipara Coast Plant Centre | 420-5655 |
| Plumbers | ATL Plumbing Ltd | 021-245-9677/420-7868 |
| Plumbers | KPL Ltd | 420-9108 |
| Pumps | KPL Ltd | 420-9108 |
| Pumps | Mid West Pumps | 420-7694 |
| Real Estate | Barfoot & Thompson-Kelly Davison | 0274-670-175 |
| Real Estate | Burmester Realty | 420-8360 |
| Real Estate | Prestige - Jana Mills | 021-509-990/420-9953 |
| Roofing | KPL Ltd | 420-9108 |
| Shower Installation | GSI Ltd | 0800-466-5327/420-8777 |
| Storage | J S Storage | 021-462-930 |
| Typesetting/Photocopying | Huapai Copy & Print | 420-9307 |
| Venue Hire | Kaipara Memorial RSA | 420-8888 |
| Your Local Business Book | yourlocalbusinessbook@gmail.com | |

Invested in Better Outcomes

Meet Mat - bringing a practical, common-sense approach to property in Helensville, Kaukapakapa, and surrounding areas.

After 15 years helping Kiwi families make major financial decisions, Mat has turned his focus to real estate, guiding locals through buying, selling, or investing with clarity and confidence.

Supported by Jane Burmester and her award-winning team - named 2026 Best Agency for Southhead, Helensville, and Kaukapakapa - Mat combines hands-on market knowledge with expert mentorship to ensure clients get the full picture.

Friendly and down to earth, Mat isn't one for filler chat. He prefers to talk about what matters: the plan, the options, and the best path toward achieving your property goals.

Curious about what the current market really means for you? Mat blends his financial planning experience with on-the-ground property knowledge to help you read the market and position yourself for the strongest possible result.



Welcome to the Team!

Mat Sturge
021 797 108



Team
BURMESTER

Burmester Realty. Licenced under The REA 2008

Free Appraisals, NO Marketing Fees and Low 2.9% Commission